



*The Complete Trojan*  
**BATHROOM COLLECTION**  
– SECOND EDITION –





*A deserved reputation*

## FOR MANUFACTURING QUALITY PRODUCTS IN THE HEART OF YORKSHIRE

**From small beginnings in 1975, Trojan has become one of the largest manufacturers of acrylic baths in Europe, with a reputation for manufacturing high quality products.**

As a company we continually invest in new designs, plant and equipment in order to keep moving forward in an ever evolving, fiercely dynamic and competitive global market.

At all levels of our organisation, we remain the forerunners of our industry. We set the standards in bath manufacturing both within the UK and overseas. Our products are manufactured to a high standard and specification, always at a competitive price.

Each person within our customers' organisation is paramount to us. We have a responsibility to show every customer our core strengths, educate them on our products and demonstrate our manufacturing ability. In the coming year we are launching a range of new products and all new marketing materials, to establish our position as the number one choice for all bath-related requirements.

We hope you enjoy our new brochure!

*D Mosley*

**David Mosley**  
Managing Director

Copyright © 2019 Trojan Plastics

All rights reserved. No parts of this document may be reproduced in any form or by any electronic or mechanical means without permission in writing from the publisher.

Image of Castle Hill, Huddersfield, home to Trojan Plastics

## CONTENTS

- |           |   |            |   |
|-----------|---|------------|---|
| <b>06</b> | <b>Trojan Baths</b><br>Made from sanitary grade cell cast acrylic, a Trojan Bath is a quality product guaranteed to provide you with comfort and relaxation.  | <b>60</b>  | <b>Aquair</b><br>Our range of Aquair systems offers you a quality Trojan Bath but with the added features of a relaxing spa experience through 3 different systems.   |
| <b>42</b> | <b>Trojancast</b><br>Manufactured in its own purpose built factory, Trojancast gives your Trojan Bath the associated strength and durability of a cast iron bath but the warmth and quality of a modern day acrylic bath. | <b>64</b>  | <b>Ramsden &amp; Mosley</b><br>Our exclusive range of solid surface baths are made using the finest raw materials and skilled craftsmanship. Being steeped in British history, all R&M baths are named after Isles that surround Britain. |
| <b>44</b> | <b>Bath Panels</b><br>A wide range of quality bath panels to suit any budget and design. Intended to provide the finishing touches to your bathrooms overall interior style.  | <b>74</b>  | <b>Bathe Easy</b><br>Our specialist range of easy access baths have been designed to make bath time a relaxing and stress free experience regardless of a persons physical abilities.   |
| <b>48</b> | <b>Tiling Solutions</b><br>Create the look that you want in your bathroom with our range of tiling solutions.   | <b>92</b>  | <b>Simply No Slip</b><br>Avoid slips and falls with this permanent slip resistant coating which can be applied to your Trojan Bath or Trojan Tray, making the surface safer when wet.   |
| <b>52</b> | <b>Bath Screens</b><br>Available in 3 classic designs, our select range of bath screens are designed to deflect water back into the bath from an over bath shower.  | <b>96</b>  | <b>Fittings</b><br>All of our baths come with the fittings required, but these change dependent on location. Take a look at the fittings that are applicable to you.  |
| <b>54</b> | <b>Trojan Trays</b><br>Our range of stone resin bonded shower trays are designed in-house with the latest technologies, providing ultimate strength and durability.   | <b>102</b> | <b>Corporate Social Responsibility</b><br>The environment is a key concern for Trojan, we like to ensure that we are doing as little harm to the environment as possible.   |



## The ultimate in quality FEATURES

At Trojan we are committed to offering something for everyone. Whether you're looking for comfort and design or size and value, we're confident that across our 6 different ranges, we have the product to suit all your bathing needs. Just look for the following symbols to identify what each range can offer.



### COMFORT

Offering contentment and relaxation



### DESIGN

Carefully considered aesthetics for all bathrooms



### DURABILITY

Considers endurance and longevity



### SIZE

Recognises the concern with space



### VALUE

Appreciates the importance of price



### EASY ACCESS

Acknowledges a variety of bathing needs

### Optional Extras



TrojanCast



Whirlpool



Airspa



Combined Whirlpool Airspa

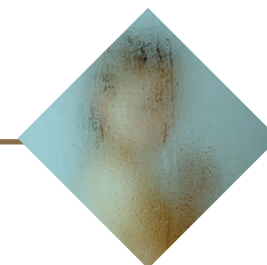
## To suit all needs OUR RANGES



Trojan Baths have become one of the largest manufacturers of acrylic baths in Europe, with a reputation for manufacturing baths of the highest quality.



PAGES 6-41



With over forty years experience, we are proud to be one of the UK's leading manufacturers of stone resin bonded shower trays.



PAGES 54-59



Our range offers the same exceptional quality you've come to expect from Trojan with the added features of a relaxing spa experience.



PAGES 60-63



At Ramsden & Mosley we are completely focused on quality. Using only the finest raw materials available and combining these with modern technology and skilled craftsmen.



PAGES 64-73



Our specialist range of easy access baths designed to take the worry out of bathing. Offering a practical, safe solution to suit any bathroom.



PAGES 74-91



A wide range of products designed with your bathroom in mind. Simply Solutions is a name you know you can trust.



PAGES 92-95




# Baths




## TROJAN

Since Trojan was founded in 1975 the philosophy of the company has remained the same: produce a quality product using the best possible materials. Our skilled craftsmen take great pride in their work to ensure you have the best possible bathing experience. Our obsession with quality is complemented by our policy of continual investment in new equipment. This combined approach means we are now one of the leading bath manufacturers in the world.

  
**DURABILITY**  
Built to last, all baths come with a 25 year guarantee

  
**VALUE**  
The best price for a high quality product

  
**COMFORT**  
In a range of sizes for maximum enjoyment

  
**SIZE**  
Recognises the concern with space

Twin Skin Floor Standing

### ALCORA

*An elegant and beautifully simple design, created to complement a wide range of sanitaryware designs. Available in a range of sizes to fit most bathrooms, this stunning bath will provide you with a beautiful bathroom focal point.*



**Sizes Available:** 1800x750, 1655x750, 1555x750, 1455x750

**Advice:**  
Supplied with a factory fitted pop up waste and overflow  
Can be drilled for bath mounted taps  
Create a truly luxury look and add floor standing bath taps with a shower mixer.

## Twin Skin Floor Standing CONSTRUCTION

*Floor standing baths are great to add an eye-catching centrepiece to any bathroom.*

- Two Lucite® acrylic sheets seamlessly bonded to create a one piece bath and surround
- Encapsulated baseboard routed and shaped to cover the full base of the bath including around the plug hole
- All Twin Skin Floor Standing baths supplied with a factory fitted support frame and adjustable feet to compensate for any uneven floor
- Unless stated otherwise, supplied with factory fitted click-clack waste and slotted overflow
- All floor standing baths are supplied with support fittings as standard.

### Material and Product Standards

- EN263, EN198, CE EN14516:2015 CL.2 PH

### Optional Extras

- Due to the construction Trojan Twin Skin Floor Standing baths cannot be fitted with an Aquair wellness system
- Trojancast cannot be applied to Trojan Twin Skin Floor Standing baths.





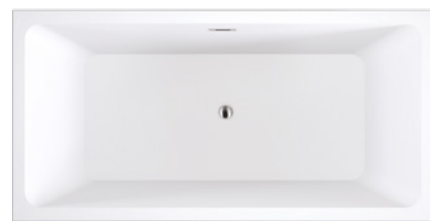


## Sanitary grade CELL CAST ACRYLIC

Sanitary grade cell cast acrylic is formulated and cast for use in the sanitaryware market. The material has many positive attributes, which make it ideal for manufacturing baths. Acrylic allows itself to be moulded into many shapes, enabling our in-house design team to create products that are ergonomically conscious and reflective of market trends.

Acrylic is warm to touch and retains the water's heat thanks to its natural insulating properties, enabling you to relax and unwind for longer. The natural gloss of cast acrylic is not only a surface finish but all the way through the acrylic sheet, resulting in a product that is smooth and very easy to clean.

*A modern square design bath, fit for the 21st century. This stylish, square floor standing bath will transform your bathroom into a bold, sophisticated space. Designed to complement modern sanitaryware, the Marlborough remains the central focus of any bathroom.*



Sizes Available: 1700x800

### Advice:

Due to the contemporary design of the bath, mounted taps cannot be fitted to the Marlborough. Square design floor standing taps would complement the square look of the Marlborough.

## MARLBOROUGH



## HAMPTON

*A beautiful thin rim floor standing bath that is elegant yet timeless in equal measure. The thinner rim design offers refinement and grace as well as durability, making it practical for family bathing, without losing the designer look from your bathroom.*



Sizes Available: 1700x800, 1600x800

### Advice:

Due to the contemporary design of the bath, mounted taps cannot be fitted to the Hampton. Either square or cylindrical floor standing taps would complement the contemporary look of the Hampton.

## Our-25 year guarantee

All Trojan Baths come with a confident 25-year guarantee against manufacturing defects. Trojan uses only sanitary grade cell cast acrylic sheet in the manufacturing of its baths. This sheet has been tested and passed to EN263 / BS7015 by an independent and industry recognised company. All Trojan baths carry the CE marking, complying with EU legislation.







Twin Skin Floor Standing

Twin Skin Floor Standing



## EMERALD

*This double-ended subtle slipper design is a stylish alternative to the traditional floor standing bath. Adding elegance as well as providing luxury to give your bathroom a designer look.*



Sizes Available: 1800x800, 1700x800

### Advice:

Due to the contemporary slipper design of the Emerald bath, mounted taps cannot be fitted. Traditional floor standing taps, perhaps with a hand held shower, would complement the slipper design of the Emerald.

At its highest point the Emerald is 720mm high.

*Twin Skin*

The Emerald Bath



## WINTON

*A floor standing slipper bath, radiating with beauty and fit for the modern bathroom, the Winton can trace its heritage to the Eaton claw-foot bath. This stunning modern slipper bath is designed to become the striking centrepiece of your bathroom.*



Sizes Available: 1700x720

### Advice:

Due to the contemporary slipper design of the Winton bath, mounted taps cannot be fitted. Traditional floor standing taps, perhaps with a hand held shower, would complement the slipper design of the Winton.

At its highest point the Winton is 820mm high.





## CLERMONT

*Set upon traditional claw feet and designed to accept bath mounted pillar taps, the Clermont is the perfect centrepiece for any classic style bathroom.*



**Sizes Available:** 1695x785

### Advice:

Designed to be drilled for bath mounted taps, the Clermont mirrors the traditional Victorian style bathroom

Adding a modern but traditional looking mixer set with hand held shower can complete the British heritage look.



## Twin Skin Claw Feet CONSTRUCTION

*With Victorian-inspired designs, claw feet baths make a stunning addition to any bathroom.*

- Two Lucite® acrylic sheets bonded under the roll top to create a jointed bath and surround
- Encapsulated baseboard is routed and shaped to cover the full base of the bath including around the plug hole
- Trojan Twin Skin Claw Feet baths are not supplied with wastes or overflows. A traditional plug and chain would be in keeping with claw feet bath design (but are not included)
- Supplied with adjustable claw feet to compensate for any uneven floor
- All claw feet baths are supplied with support fittings as standard.

### Material and Product Standards

- EN263, EN198, CE EN14516:2015 CL.2 PH

### Optional Extras

- Due to the construction Trojan Twin Skin Claw Feet baths cannot be fitted with an Aquair wellness system
- Trojancast cannot be applied to Trojan Twin Skin Claw Feet baths.

## UPPINGHAM

*A compact claw-foot bath. It's small size and Victorian design allows the traditional luxury feel even in smaller bathrooms or attic spaces.*



**Sizes Available:** 1470x735

### Advice:

Floor mounted taps allow position flexibility in a compact bath, ideally suited for the smaller bathroom or attic space.

## EATON

*Offering you a classic yet contemporary feel, the Eaton becomes the focus of any bathroom with traditional claw feet and a modern roll top slipper design.*



**Sizes Available:** 1710x740x785

### Advice:

Designed to be drilled for bath mounted taps, the Eaton mirrors the Victorian style slipper bath. At its highest point the Eaton is 785mm high.

## REPTON

*Combining elegance and practicality this back to wall bath will complement bathrooms both large and small. Designed to sit flush against a wall, the Repton will create the illusion of space in your bathroom.*



**Sizes Available:** 1685x780x625

### Advice:

Designed to be drilled for bath mounted taps, the Repton mirrors a traditional back to wall Victorian bath.







## Skirted Baths CONSTRUCTION

*Add a touch of elegance to any bathroom with a striking skirted bath.*

- Trojan Floor Standing Skirted baths are made from a Lucite® acrylic sheet and the skirt surround an ABS capped acrylic sheet
- The bath has an encapsulated baseboard that is routed and shaped to cover the full base of the bath including around the plug hole
- All Trojan Floor Standing Skirted baths are supplied with fittings as standard
- Pop up wastes and overflows can be fitted to our range of skirted baths
- All skirted baths can be drilled for bath mounted taps.

### Material and Product Standards

- EN263, EN198, CE EN 14516:2015 CL.1 PH
- FSC TT-COC-003576

### Optional Extras

- Due to the construction Trojan Floor Standing Skirted baths cannot be fitted with an Aquair wellness system
- Trojancast cannot be applied to Trojan Floor Standing Skirted baths.

*A beautiful and popular design that offers bathers comfort and space. The engineered skirt is available in a range of different colours, including black and brushed steel, allowing you to personalise your space.*



Sizes Available: 1800x800, 1700x755

### Advice:

An EPS Tiling solution kit can be provided for the Savoy bath. For full details on this kit and how it can create a wide range of different installation options see page 48

Create a truly luxury look and add floor standing bath taps with a shower mixer.

## SAVOY



Savoy shown with optional black skirt



## LONDON DE

*A simplistic yet elegant design, this skirted bath suits any bathroom and is excellent for family bathing. Available in white, black or brushed steel.*



Sizes Available: 1800x800, 1700x750

### Advice:

An EPS Tiling solution kit can be provided for the London bath. For full details on this kit and how it can create a wide range of different installation options see page 48

Create a truly luxury look and add floor standing bath taps with a shower mixer.

## EDINBURGH DE

*This double ended bath gives optimum bathing space for the whole family.*

*The simple yet spacious design works in all bathrooms.*



Sizes Available: 1800x800, 1700x750

### Advice:

An EPS Tiling solution kit can be provided for the Edinburgh bath. For full details on this kit and how it can create a wide range of different installation options see page 48

Create a truly luxury look and add floor standing bath taps with a shower mixer.

## Proud of our Yorkshire heritage

Based in a former textile mill in Huddersfield, we are proud of our Yorkshire roots and our ability to employ a local workforce from the surrounding villages of Golcar, Slaithwaite and Linthwaite.





Inset Baths  
CONSTRUCTION

*Designed to be built around or tiled in, an Inset Bath allows for a spa-like feel in any home.*

- Lucite® acrylic sheet
- Encapsulated baseboard routed and shaped to cover the full base of the bath including around the plug hole
- Injection moulded blocks to offer rim support and fixing points for installation kits
- All Trojan Inset Baths are supplied with fittings as standard in the UK and Europe.

Material and Product Standards

- EN263, EN198 , CE EN 14516:2015 CL.1 PH
- FSC TT-COC-003576

Optional Extras



AMARE  
SUPERDEEP

*A twin person bath designed to offer both intimacy and personal space in equal measure. The linear waste cover adds comfort and style to this crafted bathroom statement.*



Sizes Available: 1800x1200

Advice:

An EPS Tiling solution kit can be provided for the Amare Inset bath. For full details on this kit see page 48

The Amare can be drilled for bath mounted taps.

TITAN INSET

*The Titan Inset offers a stylish and generous bathing space for the ultimate soak. Designed to be the talking point of your bathroom suite and remain timeless even when you redecorate.*



Sizes Available: 1925x1135

Advice:

An EPS Tiling solution kit can be provided for the Titan Inset bath. For full details on this kit and how it can create a wide range of different installation options see page 48

The Titan can be drilled for bath mounted taps.



Trojan Advice

Create a true spa experience at home by adding bespoke whirlpool or airspa experience with Aquair see page 59. Depending on the type of installation, Trojan can offer a more tailored system on the Titan Inset, Amare and Oasis bath range.

*The Amare Bath*  
REWIND & RELAX







## OASIS

*A contemporary and modern design offering a regal bathing experience. The Oasis gives your bathroom a stunning centrepiece as well as catering to all your relaxation needs.*



Sizes Available: 1800 Ø

### Advice:

Taps can be mounted onto the Oasis bath, as shown in the image below

An EPS Tiling solution kit can be provided for the Oasis bath. For full details on this kit see page 48.

*Sink into a blissful*  
**LUXURY BATH**

## OVAL INSET

*This Oval Inset bath is a stylish bath with a spacious bathing area, allowing you to fully immerse yourself into a relaxing experience. Can be tiled in to create the home spa feel, see page 48.*



Sizes Available: 1800x800, 1700x755

### Advice:

An EPS Tiling solution kit can be supplied with the Oval Inset bath range. For full details on this kit and how it can create a wide range of different installation options see page 50

Standard Aquair wellness systems can be added to the Oval Inset baths – please take pipework and pumps into account if you are creating a surround for the Oval Inset bath

The Oval Inset can be drilled for bath mounted taps.







Corner Baths

Offset Corner Baths

## Maximise YOUR SPACE

### Corner & Offset Corner Baths CONSTRUCTION

*Designed to offer generous bathing spaces and maximise space in any bathroom.*

- Lucite® acrylic sheet
- Timber blocks to offer rim support and fixing points for installation kits
- Encapsulated baseboard routed and shaped to cover the full base of the bath including around the plug hole
- All Trojan Corner Baths are supplied with corner bath fittings as standard in the UK and Europe.

#### Material and Product Standards

- EN263, EN198, CE EN 14516:2015 CL.1 PH
- FSC TT-COC-003576

Available in Trojancast



*A classic corner bath, this attractive and timeless design is everything you need for an alternative looking bathroom.*



**Sizes Available:** 1450x1450, 1400x1400, 1350x1350, 1200x1200

#### Advice:

Due to its radius, the Laguna cannot be installed with EPS tiling board.

**LAGUNA**



### Why not upgrade to a WHIRLPOOL BATH

Our Aquair range offers the same exceptional quality you've come to expect from Trojan with the added features of a relaxing spa experience.



### ORLANDO LH & RH

*For those wanting luxury bathing but with limited space, the Orlando fits perfectly into the corner of any bathroom and will allow you to experience incredible relaxation.*



**Sizes Available:** 1500x1040 (LH + RH)

#### Advice:

Due to its radius, the Orlando cannot be installed with EPS tiling board  
Handed by the seat (left hand shown).







## QUEBEC

*An alternative twist on the classic corner bath, this quirky design is ideal for smaller spaces, yet still provides a luxury bathing experience.*

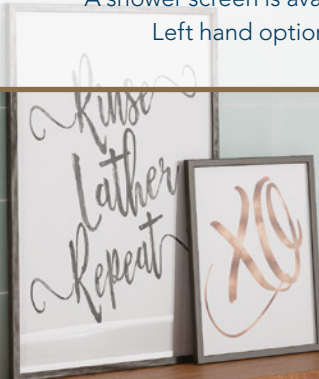


Sizes Available (LH & RH): 1500x1000

**Advice:**

Due to its radius the Quebec cannot be installed with EPS tiling board

A shower screen is available for the Quebec  
Left hand option shown above.



*Quirky Design*



## Shaped Baths CONSTRUCTION

*Designed to utilise any bathroom space and fit into alternative shaped bathrooms too!*

- Lucite® acrylic sheet
- Encapsulated baseboard routed and shaped to cover the full base of the bath including around the plug hole
- Timber blocks to offer rim support and fixing points for installation kits
- All Trojan Shaped Baths can be drilled for bath mounted taps
- All Shaped baths are supplied with bath fittings as standard in the UK and Europe.

**Material and Product Standards**

- EN263, EN198 , CE EN 14516:2015 CL.1 PH
- FSC TT-COC-003576

**Optional Extras**



*With a distinctive curved design, the D shape sits against the wall, transforming a bathroom into a modern and contemporary space.*



Sizes Available: 1700x800

**Advice:**

Don't forget the one piece D Shaped panel  
Cannot be installed with EPS tiling board.

## D SHAPED

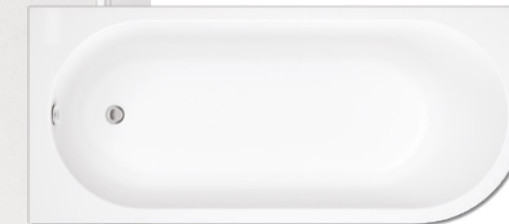






## Essential Style

*Designed with modern bathrooms in mind, the J shape is ideal where space is limited but style is essential.*



Sizes Available (LH & RH): 1700x750, 1500x750

### Advice:

Don't forget the J Shape dedicated bath panel  
Cannot be installed with EPS tiling board  
Handed by plug end (left hand shown above).

**J SHAPED**

*Did you know Trojancast is suitable for almost all Trojan Baths?*

Trojancast is a substantial reinforcement process which results in each bath being incredibly strong and hard-wearing. Upgrade your bath today!

See page 42 for more information.







*Available with screen*

The Space Saver bath is ideal for smaller spaces and has a matching shower screen.

## Shower Baths CONSTRUCTION

*Designed to give total flexibility between bathing and showering in any bathroom.*

- Lucite® acrylic sheet
- Encapsulated baseboard routed and shaped to cover the full base of the bath including around the plug hole
- Timber blocks to offer rim support and fixing points for installation kits
- Excluding the Elite L Shape, our range of shower baths can be drilled for bath mounted taps above the waste and overflow, or half way down the long wall side
- All shower baths are supplied with bath fittings as standard in the UK and Europe.

**Material and Product Standards**

- EN263, EN198 , CE EN 14516:2015 CL.1 PH,
- BS EN 12150
- FSC TT-COC-003576

### ELITE L SHAPE

*The striking L shaped design offers a crisp finish to this shower bath. Living up to its name, the Elite L delivers the ultimate showering and bathing experience.*



**Sizes Available (LH & RH): 1675x850x700**

**Advice:**

The Elite L Shape has a dedicated bath panel  
Can **only** be drilled for bath mounted taps half way down the long wall side  
It is not possible to fit bath mounted taps at the end of the bath  
The Trojan screen has a rail to create a more luxurious look and feel to the bathroom  
Handed by screen (right hand shown above).

### SPACE SAVER

*Living up to its name, this model is ideal for studio style bathrooms where space is limited but style is essential. Add on a Space Saver shower screen for a sophisticated finish.*



**Sizes Available (LH & RH): 1690x690x500**

**Advice:**

The Space Saver has a dedicated bath panel  
The Trojan Space Saver screen is supplied with a rail to create a more luxurious look and feel to the bathroom  
The screen is designed to fit at the narrow end of the bath but it can be fitted at the wider end of the bath too  
Handed by plug end (right hand shown above).

### Add something special OPTIONAL EXTRAS

Add something extra to any of the shower baths.







## Trojan Advice

Create your own personal style with our tiling solutions, allowing you to create a home bathroom that looks like your very own spa with inbuilt shelving! Check out the wide range of options available on p49.



## SOLARNA L

*A magnificent L shaped design providing a spacious showering area, with contoured edges giving it a clean and crisp finish.*



Sizes Available (LH & RH): 1700x850x700, 1500x850x700

### Advice:

The Solarna L has a dedicated bath panel  
The Trojan screen has a rail to create a more luxurious look and feel to the bathroom  
Handed by screen (right hand shown above).

## COMPACT CONCERT P

*The Compact Concert is ideal for smaller spaces and is available in both left and right hand options.*



Sizes Available (LH & RH): 1675x800x700, 1500x800x700

### Advice:

The Compact Concert P has a dedicated bath panel  
The Trojan screen has a rail to create a more luxurious look and feel to the bathroom  
Cannot be installed with EPS tiling board  
Handed by screen (left hand shown above).





Shower Baths

## CONCERT P

*Combining showering and bathing in a distinctive P shaped design with sleek edges and a stunning white gloss finish. Available in a wide range of sizes making it suitable for all traditional and smaller bathrooms.*



**Sizes Available (LH & RH):** 1700x850x750, 1675x850x750, 1600x850x750, 1500x850x750

**Advice:**

Cannot be installed with EPS tiling board  
The Concert P has a dedicated bath panel.

## Add something special OPTIONAL EXTRAS

Add something extra to any of the baths featured in this section.



## Double Ended Baths

## Double Ended Baths CONSTRUCTION

*Indulgent yet practical, these designs bring a touch of glamour to any bathroom.*

- Lucite® acrylic sheet
- Encapsulated baseboard routed and shaped to cover the full base of the bath including around the plug hole
- Timber lengths offer rim support and fixing points for installation kits
- All double ended baths can drilled for bath mounted taps
- All Trojan Double Ended Baths are supplied with bath fittings as standard in the UK and Europe.

### Material and Product Standards

- EN263, EN198 , CE EN 14516:2015 CL.1 PH
- FSC TT-COC-003576

### Optional Extras



*Practical and timeless design perfect for family bathing, the Cascade model sits well in all styles of bathroom. The double-ended option offers you flexibility and comfort.*



**Sizes Available:** 1800x800, 1700x750, 1700x700, 1600x750

**Advice:**

Suitable for the following panels;  
standard rectangular (see page 46), vinyl wrapped high gloss MDF (see page 46) and The One Piece (see page 45)  
Suitable for Trojan EPS Tiling Board (see page 48).

## CASCADE DE







### CASCADE 460 DE SUPERDEEP

*An adaption of the Cascade model, the 460mm deep bath has been designed with a deeper base to offer you superior relaxation during those long evening soaks.*



**Sizes Available:** 1900x900, 1800x800, 1700x750

**Advice:**

Due to depth of bath it may not be possible to use a standard 510mm high rectangular panel during installation

Suitable for Trojan EPS Tiling Board (see page 48).



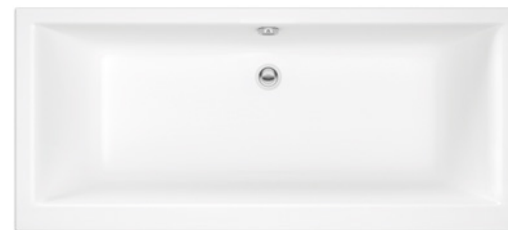
### Supporting Communities

At Trojan, we strongly believe the local community is as important as the global environment. As part of our commitment to the local community, we support local charity Ruddi's Retreat. Take a look at their inspiring work: [www.ruddisretreat.org](http://www.ruddisretreat.org).



### ELITE

*This classic and chic rectangular design ensures the Elite compliments modern bathrooms.*



**Sizes Available:** 1800x800, 1700x750, 1700x700

**Advice:**

Suitable for the following panels; standard rectangular (see page 46), vinyl wrapped high gloss MDF (see page 46) and The One Piece (see page 45)  
Suitable for Trojan EPS Tiling Board (see page 48).

### ALGARVE

*A stunning double-ended design, giving your bathroom that effortless feel of sophistication.*



**Sizes Available:** 1800x800, 1700x750

**Advice:**

Suitable for the following panels; standard rectangular (see page 46), vinyl wrapped high gloss MDF (see page 46) and The One Piece (see page 45)  
Suitable for Trojan EPS Tiling Board (see page 48).







## SOLARNA DE

*Generously sized yet undoubtedly comfortable, the Solarna allows you to fully relax at the end of a long day.*



**Sizes Available:** 1800x800, 1700x800, 1700x750, 1700x700

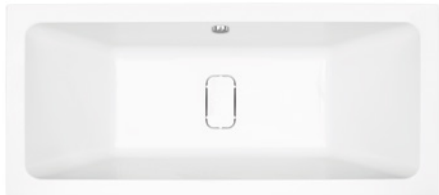
**Advice:**

Suitable for the following panels;  
standard rectangular (see page 46), vinyl wrapped high gloss MDF (see page 46) and The One Piece (see page 45)  
Suitable for Trojan EPS Tiling Board (see page 48).



## SOLARNA LINEAR SUPERDEEP

*At 460mm deep and with an innovative cover plate to hide your waste, the Solarna Linear adds a flawless finish to a contemporary looking bathroom.*



**Sizes Available:** 1900x900, 1800x800, 1700x750

**Advice:**

Innovative acrylic waste cover held in place with concealed magnets

Due to depth of bath it may not be possible to use a standard 510mm high rectangular panel during installation

Suitable for Trojan EPS Tiling Board (see page 48).

### Trojan Advice

Did you know we offer a one-piece bath panel?

The Trojan innovative One Piece bath panel is manufactured in one single piece and as it is a universal design, it fits rectangular baths ranging from 1800x800mm down to 1200x700mm in size. The One Piece fits a wide range of bath types and sizes, suitable for double and single ended and once trimmed, it fits in minutes, saving time on installation. There is no join between the front and end panel, creating a stunning professional finish every time. Reinforced with glass fibre matting for strength, resulting in a solid feel when fitted.

### The One Piece



## Single Ended Baths CONSTRUCTION

*Our range and choice of styles & sizes make these baths the ideal partner for any bathroom.*

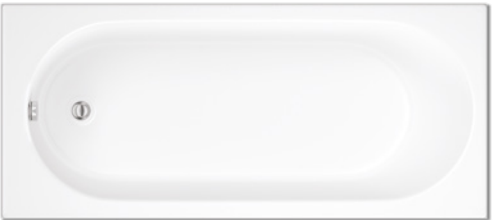
- Lucite® acrylic sheet
- Excluding the Granada, encapsulated baseboard routed and shaped to cover the full base of the bath including around the plug hole
- UK & Ireland baths supplied with timber frame including 4mm plywood tap platform to offer rim support and fixing points for installation kits
- Europe and RoW supplied with timber lengths to offer rim support and fixing points for installation kits
- All single ended baths can be drilled for bath mounted taps
- All Trojan Single Ended baths are supplied with bath fittings as standard in the UK and Europe.

**Material and Product Standards**

- EN263, EN198, CE EN 14516:2015 CL.1 PH,
- FSC TT-COC-003576

## CASCADE 460D SE SUPERDEEP

*An adaption of the classic Cascade, designed with a deeper base to hold a larger amount of water, offering you a greater bathing experience.*



**Sizes Available:** 1800x800, 1700x750, 1600x750, 1700x700

**Advice:**

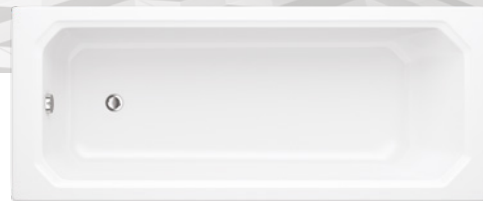
Due to depth of bath it may not be possible to use a standard 510mm high rectangular panel during installation  
Suitable for EPS Tiling Board (see page 48).





## ART DECO

*Making the traditional modern, the Art Deco is perfect for traditional heritage styled bathrooms.*



**Sizes Available:** 1700x750, 1700x700

**Advice:**

Complete the look with our Tudor Panels (see page 47)

Suitable for the following panels;  
standard rectangular (see page 46), vinyl  
wrapped high gloss MDF (see page 46) and  
The One Piece (see page 45)

Suitable for Trojan EPS Tiling Board (see page 48).



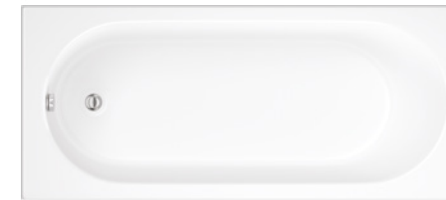
*Original name in bathrooms*  
**THOMAS CRAPPER**

Trojan is owned by Hartford Holdings which also owns Thomas Crapper & Co. Ltd, the Original name in bathrooms! If you are wanting to create a truly authentic bathroom visit [www.thomas-crapper.com](http://www.thomas-crapper.com).



## CASCADE SE

*One of our best selling baths, the Cascade SE is hardwearing & practical yet complements any bathroom style.*



**Sizes Available:** 1800x800, 1700x800, 1700x750, 1700x700, 1675x700, 1600x700, 1500x700

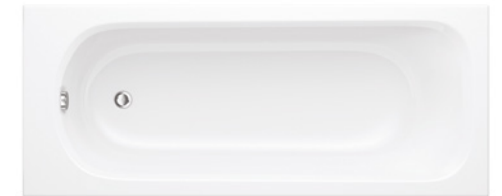
**Advice:**

Suitable for the following panels;  
standard rectangular (see page 46), vinyl  
wrapped high gloss MDF (see page 46) and  
The One Piece (see page 45)

Suitable for Trojan EPS Tiling Board (see page 48).

## DERWENT

*Bringing joy and comfort to your bathing, the Derwent single ended bath will satisfy all your bathing desires.*



**Sizes Available:** 1700x750, 1700x700, 1600x700, 1500x700, 1400x700, 1200x700

**Advice:**

Can be supplied with grips (fitted during installation)

Suitable for the following panels;  
standard rectangular (see page 46), vinyl  
wrapped high gloss MDF (see page 46) and  
The One Piece (see page 45)

Suitable for Trojan EPS Tiling Board (see page 48).

## AQUARIUS TG

*A stylish twin gripped bath, the Aquarius comes equipped with twin grips and textured base, making it ideal for families with varied bathing needs.*



**Sizes Available:** 1700x700, 1500x700

**Advice:**

Supplied with grips (fitted during installation)

Suitable for the following panels;  
standard rectangular (see page 46), vinyl  
wrapped high gloss MDF (see page 46) and  
The One Piece (see page 45)







## GRANADA

*A popular twin gripped bath with a textured base, the Granada is ideal for family bathing and busy households.*



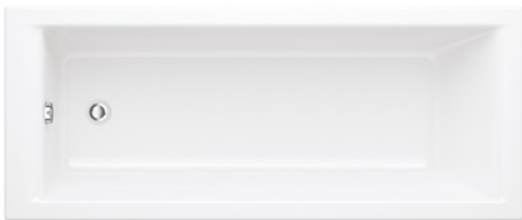
**Sizes Available:** 1700x700, 1675x700, 1500x700

**Advice:**

Supplied with factory fitted grips  
Unique timber "H" frame added to the exposed baseboard  
Suitable for the following panels;  
standard rectangular (see page 46), vinyl wrapped high gloss MDF (see page 46) and The One Piece (see page 45)  
Suitable for Trojan EPS Tiling Board (see page 48).

## ELITE SOLO

*The Elite Solo is one of our square single ended baths, designed with the modern bathroom in mind.*



**Sizes Available:** 1700x700, 1500x700

**Advice:**

Suitable for the following panels;  
standard rectangular (see page 46), vinyl wrapped high gloss MDF (see page 46) and The One Piece (see page 45)  
Suitable for Trojan EPS Tiling Board (see page 48).



## GRANADA II

*A modern version of the Granada, designed to fit all straight shower screens.*



**Sizes Available:** 1700x700, 1675x700, 1600x700, 1500x700

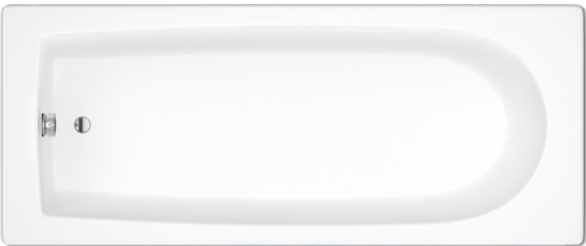
**Advice:**

Supplied with factory fitted grips  
Suitable for the following panels;  
standard rectangular (see page 46), vinyl wrapped high gloss MDF (see page 46) and The One Piece (see page 45)  
Suitable for Trojan EPS Tiling Board (see page 48).



## HILTON

*Simplistically beautiful and designed to provide you with the upmost of comfort, the Hilton is a representation of class and elegance.*



**Sizes Available:** 1800x800, 1700x750, 1700x700, 1600x700, 1500x700

**Advice:**

Suitable for the following panels;  
standard rectangular (see page 46), vinyl wrapped high gloss MDF (see page 46) and The One Piece (see page 45)  
Suitable for Trojan EPS Tiling Board (see page 48).

## Add something special OPTIONAL EXTRAS

Add something extra to any of the Single Ended baths.

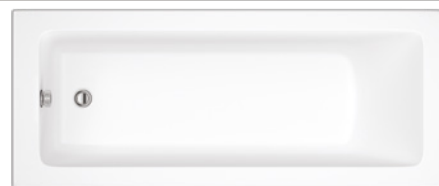






### SOLARNA SE

*Efficient and practical, the Solarna has a style that will suit all your bathroom ideas.*



**Sizes Available:** 1800x800, 1700x750, 1700x700, 1675x700, 1600x700, 1500x700, 1400x700

**Advice:**

Suitable for the following panels;  
standard rectangular (see page 46), vinyl  
wrapped high gloss MDF (see page 46) and  
The One Piece (see page 45)  
Suitable for Trojan EPS Tiling Board (see page 48).

### Trojan Point of Difference

Trojan Baths are manufactured, tested and passed to the European and British Standard (EN198/BS4305) – giving you complete peace of mind.

### KEYHOLE

*This unique keyhole design will convert your bathroom into an alternative looking space, as well as accommodating all your bathing requirements.*



**Sizes Available:** 1700x800, 1600x750

**Advice:**

Suitable for the following panels;  
standard rectangular (see page 46), vinyl  
wrapped high gloss MDF (see page 46) and  
The One Piece (see page 45)  
Suitable for Trojan EPS Tiling Board (see page 48).







# Trojancast: Our Intensive Reinforcement

## Trojan built a complete new factory to manufacture Trojancast products.

Separate from all other production areas, the dedicated factory has been equipped with the latest technologies and is run by a team of specialist personnel who take pride in each and every Trojancast bath they produce.

## Quality means everything

At each stage of production each individual bath is checked to ensure it reaches our high standards. Each individual employee that checks the bath stamps a label acknowledging they have fulfilled their job requirement. This ensures that the bath manufactured meets our quality criteria. This check label is placed on the back of the bath and remains with it through to delivery and installation.

## Adding value at every stage

As well as the natural benefits of acrylic and the intensive reinforcement of the Trojancast process, all Trojancast baths come with our luxury fittings pack (See page 90).

The guarantee on a Trojancast bath increases from our standard 25 years to 30 years, giving you extra peace of mind.



Trojancast



### Substantial reinforcement

Trojancast is an intensive reinforcement process offered by Trojan to all our standard acrylic baths\*. This reinforcement process results in each bath being incredibly strong and hard-wearing.



### Insulating properties

Trojancast British racing green resin jacket covers the entire underside of the bath adding real strength and insulating properties. The additional bath thickness reduces the heat of the water being lost through the side walls, keeping your water hotter for longer.



### Peace of mind

Trojancast results in a bath that has extra strength and rigidity – traditionally attributes only associated with cast iron baths. Ideal for larger families, hotels, B&Bs and rented accommodation.



### Available on any range

Trojancast is available on all standard Trojan Baths\* – we don't have a limited range, you can add it to almost any bath you choose!

Trojancast



### Made in England

Our baths are made with pride in Yorkshire, England. We take control of all our processes giving you peace of mind. Trojancast should not be confused with imported baths claiming to have been through the same process and have the same properties. If it is not made in England it is not to the same standard.



### Guaranteed

The guarantee on a Trojancast bath increases from our standard 25 years to 30 years. No imported bath will offer the same assurances.

\* unless otherwise stated







## Bath Panels



# TROJAN

Whether you are considering tiling your bath in or using a standard panel, Trojan offers a wide range of quality solutions suited to any budget and design. Our wide range of bath panels will help play an essential role to your bathrooms overall interior style and finish.

High impact polystyrene panels offer an entry level solution. Available in 2mm or 3mm the Supastyle and Flat panel are timeless in their design and are complemented by the Tudor traditional look panel.

The mid to upper level solution is provided by the Titan, an innovative twin skin panel offering a simple design that hides an engineered second panel that offers substantial strength and durability.

Our exclusive range includes The One Piece, a pioneering front and end panel constructed from a marine grade gel coat that has been hand laminated with fibreglass matting to create a seamless front and end panel into one piece that can be cut to size on site. The end result is an integrated front and end panel that will present the wow factor on any rectangular bath.



DURABILITY



VALUE

Bath Panels

Bath Panels

## Bath Panel CONSTRUCTION

- **The One Piece**  
Marine grade gel coat surface with a hand laminated glass roving back
- **MDF vinyl wrapped panels**  
15mm MDF board with a high quality vinyl wrap glued, sealed and heat pressed. Supplied with plinth for adjustment
- **Titan Panels**  
A universal 3mm front panel with a 3mm chevron style backing. The two panels are bonded together using specialist styrene glue over a hot melt glue
- **Standard Panels**  
High impact polystyrene sheet vacuum formed and trimmed to offer a quick, quality solution for the UK market. Export panels are manufactured from ABS capped acrylic.

## THE ONE PIECE

*Innovative universal front and end panel manufactured in one single piece.*



Universal design, supplied to fit rectangular baths ranging from 1800x800mm down to 1200x700mm in size

Fits a wide range of bath types and sizes, suitable for double and single ended

Once trimmed, fits in minutes, saving time on installation

No join between the front and end panel, creating a stunning professional finish every time

Reinforced with glass fibre matting for strength, resulting in a solid feel when fitted.



*One Single Piece*



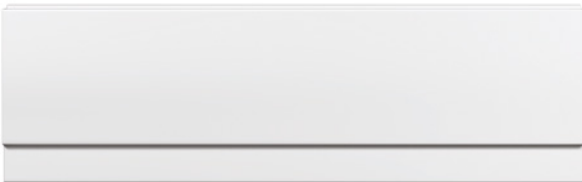


Construction

MDF vinyl wrapped panels offer a complementary solution to white gloss furniture. The panels are supplied with an adjustable plinth providing great flexibility. Trojan's vinyl wrapped panels are not to be mistaken for cheaper painted panels that by comparison are inferior and will not stand the test of time in a bathroom environment.

MDF VINYL WRAPPED BATH PANEL

*A simple yet strong bath panel that looks great in any bathroom. Supplied with adjustable plinth.*



Type: Front & End Panels  
Front Panel Size: 1800, 1700, 1500  
End Panel Size: 800, 750 , 700

Material	Thickness	Colours
MDF	15mm	White

TITAN BATH PANEL

*A universal panel that works in both modern and traditional bathrooms.*



Type: Front & End Panels

Front Panel Size: 1800x510, 1700x510, 1500x510  
End Panel Size: 800x510, 750x510, 700x510

Material	Thickness	Colours
High Impact Polystyrene	x2 3mm	White
ABS Capped Acrylic	x2 3mm	White

FLAT BATH PANEL

*A plain design with a right angled return at the top and bottom of the panel offering a timeless look for your bathroom.*



Type: Front & End Panels

Front Panel Size: 1800x510, 1700x510, 1500x510  
End Panel Size: 800x510, 750x510, 700x510

Material	Thickness	Colours
High Impact Polystyrene	2/3mm	White
ABS Capped Acrylic	3mm	White

TUDOR BATH PANEL

*Designed to complement more traditional bathrooms the Tudor panel is ideally suited for the Art Deco bath.*



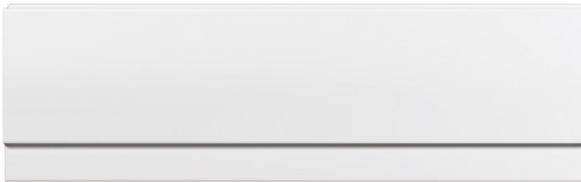
Type: Front Panel

Front Panel Size: 1700x510, 750x510  
End Panel Size: 750x510, 700x510, 700x510

Material	Thickness	Colours
High Impact Polystyrene	3mm	White
ABS Capped Acrylic	3mm	White

SUPASTYLE BATH PANEL

*Hugely popular panel design that complements the majority of bathroom designs. Recessed top edge to sit between the bath's trimmed edge and timber support frame.*



Type: Front & End Panels

Front Panel Size: 1800x510, 1700x510, 1500x510  
End Panel Size: 800x510, 750x510, 700x510

Material	Thickness	Colours
High Impact Polystyrene (UK)	2/3mm	White
ABS Capped Acrylic (Europe)	3mm	White

Export Advice

Shower bath panels supplied by Trojan outside of the UK are only manufactured using ABS Capped Acrylic.







## Tiling Solutions



# TROJAN

As a company we are passionate about helping you create the look you desire in your bathroom. With a range of tiling solutions to create an individual look for a variety of baths, we can assist the installer in creating a genuine spa feel to your new or renovated bathroom.

The Trojan Panel Tiling Board is made from expanded polystyrene foam (EPS) with a cement based polymer and fibreglass reinforcement covering. The cement based polymer means the panels have three times the adhesion grip to the tiles than timber or plasterboard alternatives. Trojan's Panel Tiling Board offers a 100% moisture resistant solution if your preferred option is to tile the bath in.

All rectangular Panel Tiling Boards come with pre-fitted adjustable feet in the panel, to assist in a level fit on uneven bathroom floors.



VALUE



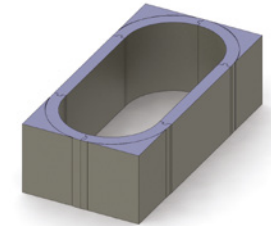
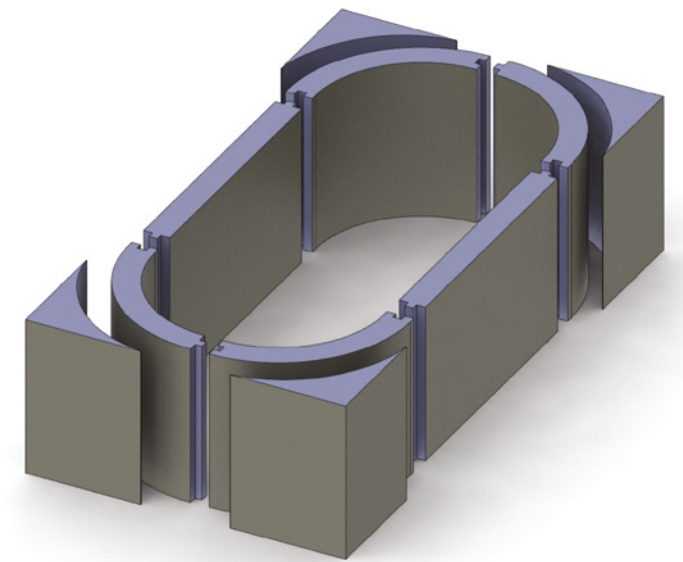
DESIGN



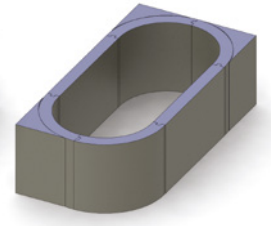
DURABILITY

## Creating your own personal style

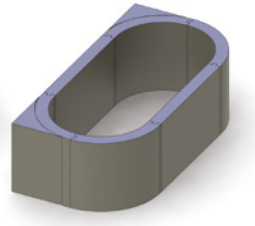
Our oval multi design bath surround kit allows you to create almost any design you require from one kit, the kit shown is available for the Titan Inset and the Oval Inset baths (1800x800 and 1700x755). See page 19.



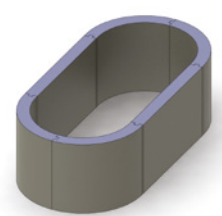
Option 1



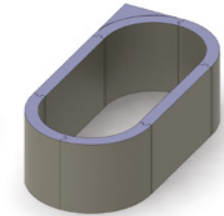
Option 2  
Left or right hand



Option 3



Option 4



Option 5

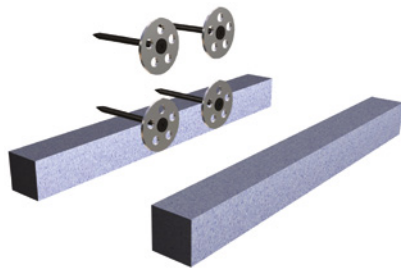




All rectangular Panel Tiling Boards come with pre-fitted adjustable feet in the panel to assist in a level fit on uneven bathroom floors.

Bath Panel Mounting Kit

Includes 2x foam strips with fixings



Bespoke Bath Panels

We are able to produce almost any tileable bath panel solution to your specific requirements. Simply supply us with your detailed specification and we will be pleased to quote you prices and delivery times.

Contact us on 01484 648181.

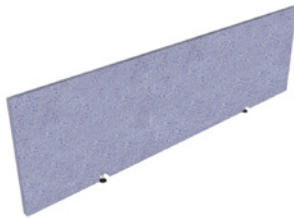
Standard Bath Front Panels

STD bath Front Panel for Baths up to 1800mm

Size (mm):  
1795x600x30

STD bath Front Panel for Baths up to 2050mm

Size (mm):  
2050x600x30



Standard Bath End Panels

Size (mm):  
805x600x30



Bath End Panel with Tiled Lip

Left & Right Hand

Size (mm):  
905x580x30



Bath Front Panel with Tiled Lip

Bath Front Panel with Tiled Lip for Baths up to 2050mm

Size (mm):  
2050x580x30

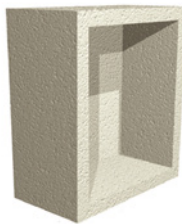


Want built-in shelves and storage areas in your bathroom? Trojan Panel Tiling Board is also available in pre-assembled sections so that once fitted, can easily be tiled to provide an integrated 100% moisture resistant solution.

Waterproof Recessed Storage Units  
350x240mm

Single recessed waterproof storage unit  
100mm depth  
180mm depth

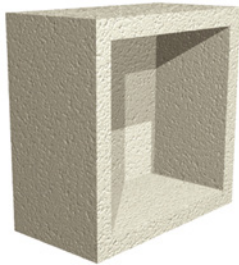
External size (mm)  
350x240x100  
350x240x180



Waterproof Recessed Storage Units  
350x350mm

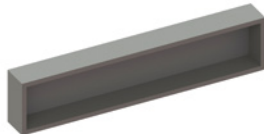
Single recessed waterproof storage unit  
100mm depth  
180mm depth

External size (mm)  
350x350x100  
350x350x180



Waterproof Recessed Storage Units  
350x1600mm

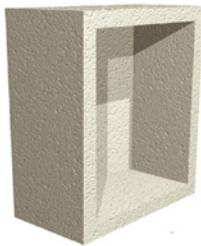
Single recessed waterproof storage unit  
180mm depth



Waterproof Recessed Storage Units  
420x350mm

Single recessed waterproof storage unit  
100mm depth  
180mm depth

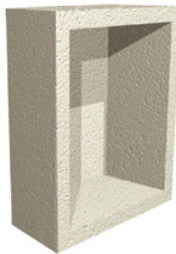
External size (mm)  
420x350x100  
420x350x180



Waterproof Recessed Storage Units  
800x500mm

Single recessed waterproof storage unit  
100mm depth  
180mm depth

External size (mm)  
800x500x100  
800x500x180







Bath Screens

TROJAN

Trojan's select range of glass screens have been created to bring a touch of elegance and continued quality to any bathroom. Designed to deflect water back into the bath from an over bath shower, the screen is an obvious replacement for the dated shower curtain. Available in three simplistic yet effective designs, which include a Curved, Straight and Sail option.

Bath Screens

All bath screens are 1400mm high and assembled using 6mm glass:

Type	Size (mm)	Glass
Curved	1400H	6mm
Straight	1400H	6mm
Sail	1400H	6mm

We also offer speciality screens for the following baths:

Name	Size (mm)	Glass	Notes
Concert	1400H	6mm	Comes with rail
Solarna/Elite	1400H	6mm	Comes with rail
Space Saver	1400H	6mm	Comes with rail

Bath Screens

Bath Screens

CONSTRUCTION

- Extruded aluminium profile
- 1400mm high
- 6mm thickness

Material and Product Standards

- BS EN 12150

CURVED



Sizes Available 1400H      Glass 6mm

STRAIGHT



Sizes Available 1400H      Glass 6mm

SAIL



Sizes Available 1400H      Glass 6mm





# Trays

## TROJAN

Our trays are designed in-house with the latest technologies for the ultimate performance, strength and durability. Our philosophy is simple; produce a quality product using the best possible raw materials.



### *UK leaders in quality and service*

With over forty years' experience, we are proud to be one of the UK's leading manufacturers of stone resin bonded shower trays.

After four decades at the forefront of the bathroom industry we remain committed to our customers and ensure our products are manufactured to the highest standard.

Trojan Trays are manufactured at Firm Mills a factory in Huddersfield, West Yorkshire. We have a genuine care for what we do, and at every step of your journey with us, we guarantee everything we do is quality assured and delivered with integrity.

Our trays are designed in-house with the latest technologies for the ultimate performance, strength and durability. Our philosophy is simple; produce a quality product using the best possible raw materials.

In an ever evolving market Trojan Trays now offers a wide range of Slimline30™ trays to create a true designer look on traditional timber floors. Made from so-extended acrylic and engineered to drain Slimline30™ trays from Trojan are a credible alternative to a tiled (wet room) shower floor.

Enjoy looking over the wide choice of shapes and sizes with confidence that whichever tray you choose, it has been made with pride in Britain.

### *UK & Ireland Riser Kit*

All of our Slimline40™ trays are cast with a threaded insert and can be supplied with the optional riser kit.

These easy installation kits contain everything you need to plumb and install your shower tray as well as raising it from the floor.

#### **Each kit contains:**

- Adjustable Feet
- Universal Panels suitable for a square, rectangle, quadrant and offset quadrant shower trays
- Reversible Panel Fixing Clips

The kits are suitable for all Slimline40™ Shower Trays and come with straight forward, easy to follow instructions.

\* Not yet available for Slimline30™ Shower Trays

### *European Riser Kit*

- Adjustable Feet
- Optional Panel Pack

### *90mm Hi-Flow Waste*

Our 90mm waste system has been designed to cope with even the most powerful showers, allowing water to be carried away at a rate of up to 36 litres per minute.

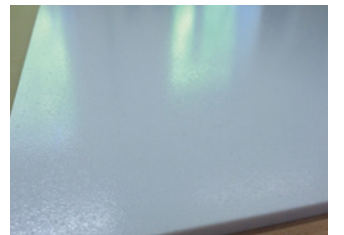
- Manufactured to BS EN 274-1\_2002
- Complete with off-set elbow
- Easy to clean and maintain
- Quick release inner unit



### *Simply No Slip*

All our trays can be treated with Simply No Slip, an easy to apply coating which ensures surfaces are less slippery when wet.

- Option to factory apply or easy to use at home kits
- Independently tested to DIN 51097: 1992 (Class C rated) and BS 7976-2: 2002







SLIMLINE30™

Made from extruded acrylic and available in 23 different sizes and designs, our Slimline30™ shower trays suit virtually all types of installation and are compatible with most popular shower enclosures.

Our Slimline30™ Shower Trays

Our beautifully designed Slimline30™ trays add simple sophistication to any bathroom.

Without compromising on strength or quality, our 30mm Slimline30™ tray creates a contemporary look and is perfect for a modern wet room design.

- Our low profile, stone resin bonded trays are available in a range of options:
- Available as square, rectangle, quadrant and off set quadrant
  - Available in 23 size options
  - Supplied with a 90mm waste
  - Includes a 10-year guarantee.

Slimline30™ can be treated with Simply No Slip – our easy to apply anti-slip coating.

Slimline30™ Quadrant



Size (550R)	Height (mm)	Waste dia. (mm)	Waste position
800x800	30	90	RH waste
900x900	30	90	RH waste

Slimline30™ Off-Set Quadrant (LH&RH)



Size	Height (mm)	Waste dia. (mm)	Waste position
1200x900 LH	30	90	Centre rad.
1200x900 RH	30	90	Centre rad.



Our 10-year guarantee

All our stone resin bonded trays offer superior quality – which is backed by our 10-year guarantee.



Slimline30™ Square



Size	Height (mm)	Waste dia. (mm)	Waste position
760x760	30	90	Centre side
800x800	30	90	Centre side
900x900	30	90	Centre side

Slimline30™ Rectangle



Size	Height (mm)	Waste dia. (mm)	Waste position
1000x760	30	90	Centre side
1000x800	30	90	Centre side
1200x760	30	90	Centre side
1200x800	30	90	Centre side
1200x900	30	90	Centre side
1400x800	30	90	Centre side
1400x900	30	90	Centre side
1500x800	30	90	Centre side
1500x900	30	90	Centre side
1600x800	30	90	Centre side
1600x900	30	90	Centre side
1700x760	30	90	Centre side
1700x800	30	90	Centre side
1700x900	30	90	Centre side
1800x800	30	90	Centre side
1800x900	30	90	Centre side



40 years' experience

After four decades at the forefront of the bathroom industry we remain committed to our customers and ensure our products are manufactured to the highest standard.



Reduce the chance of slips and falls with this innovative easy to apply, post installation slip resistant treatment. See page 94.





SLIMLINE40™

Classic and contemporary looks give the Trojan Slimline40™ shower tray everything you need for that fresh, exhilarating showering experience. With over 40 sizes to choose from you are sure to find one to suit your needs.

Our Slimline40™ Shower Trays

- Our low profile, gel coat stone resin bonded trays are available in a range of options:
- Available as square, rectangle, quadrant and off set quadrant
  - Available in 44 size options
  - Available with a 90mm waste
  - Includes a 10-year guarantee
  - Plain modern finish to the base of the tray
  - Available with panel easy plumb kits.

Slimline40™ Quadrant



Size (550R)	Height (mm)	Waste dia. (mm)	Waste position
800x800	40	90	RH waste
900x900	40	90	RH waste
1000x1000	40	90	RH waste

Slimline40™ Off-Set Quadrant (LH&RH)



Size	Height (mm)	Waste dia. (mm)	Waste position
900x800	40	90	Centre rad.
1000x800	40	90	Centre rad.
1000x900	40	90	Centre rad.
1200x800	40	90	Centre rad.
1200x900	40	90	Centre rad.



Our 10-year guarantee

All our gel coat stone resin bonded trays offer superior quality – which is backed by our 10-year guarantee.



Slimline40™ Square



Size	Height (mm)	Waste dia. (mm)	Waste position
700x700	40	90	Centre side
760x760	40	90	Centre side
800x800	40	90	Centre side
900x900	40	90	Centre side
1000x1000	40	90	Centre side

Slimline40™ Rectangle



Size	Height (mm)	Waste dia. (mm)	Waste position
900x700	40	90	Centre side
900x760	40	90	Centre side
900x800	40	90	Centre side
1000x700	40	90	Centre side
1000x760	40	90	Centre side
1000x800	40	90	Centre side
1000x900	40	90	Centre side
1100x700	40	90	Centre side
1100x760	40	90	Centre side
1100x800	40	90	Centre side
1100x900	40	90	Centre side
1200x700	40	90	Centre side
1200x760	40	90	Centre side
1200x800	40	90	Centre side
1200x900	40	90	Centre side
1400x800	40	90	Centre side
1400x900	40	90	Centre side
1500x900	40	90	Centre side
1600x800	40	90	Centre side
1700x700	40	90	Centre side
1700x800	40	90	Centre side
1700x900	40	90	Centre side
1800x700	40	90	Centre side
1800x760	40	90	Centre side
1800x800	40	90	Centre side
1800x900	40	90	Centre side







Aquair

Aquair

# AQUAIR

WHIRLPOOL BATHS

## Why choose Aquair?

Our range of outstanding Aquair whirlpool baths offer the same exceptional quality you have come to expect from Trojan with the added features of a relaxing spa experience.



### COMFORT

Offering contentment and relaxation



### SIZE

Recognises the concern with space

## Our additional options:



**Bluetooth Connection**  
Play music through your bath by connecting it via Bluetooth to music streaming devices



**In line water heater**  
Heats the water during the whirlpool cycle to improve relaxation and bathing time by compensating for natural heat loss



**Ozonator**  
Removes harmful bacteria during the whirlpool cycle for added hygiene



**Single LED light**  
One LED light that can change colour (seven colours)

Aquair

## Quality Components

All components of our whirlpool bath are produced by world renowned experts in whirlpool design and technology. Water is drawn from the bath and forced back through jets. The systems use flexible pipe work, which is smooth, so not as to retain water, yet strong enough to withstand any sagging.

## System Choice

We offer a variety of water and air systems which can also be combined to create the ultimate wellness system. In addition there are a number of different options and upgrades to personalise your bath to your needs.

## Ambient Options

Aquair offer a range of lighting options to help you create the perfect environment to relax in.

## Attention to Detail

Hygienic drainage is crucial to great design. Our pipe work is shaped and supported to promote maximum system drainage and minimal water retention. Ozonators are available for customers wishing to clean the water during use. A cleaning solution is also available to keep your system clean and fresh.

## Safety

All our whirlpool systems include 'child safety suction'. Tested to BS EN 12764:2004+A1:2008.

## Quality Assured

Each component part that makes our systems is 100% quality assurance checked prior and during the installation onto the bath by fully trained and approved operators.

Pop up waste and overflow supplied as standard.

Two year guarantee on all systems.

All our baths are factory tested and approved. We test each one of our whirlpool baths under normal working conditions for 30 minutes and then a 30 minute standing period giving you absolute peace of mind.

By choosing an Aquair system on a Trojan bath there is no third party handling. We control the entire manufacturing process and the fitting of the system itself. We provide our own dedicated service van to ensure that we can provide a prompt and professional aftersales backup.

System	Level	No. of Jets	Position of Jets
<b>Whirlpool</b> Jets feed water into the bath at pressure, to offer an invigorating bathing experience.	One	6	Sides (3+3)
	Two	8	Sides (4+4)
	Three	14	Sides (3+3) + ends (4+4)
<b>Airspa</b> Air bubbles are released into the water producing a gentle, calming massaging fizz.	One	12	Base (12)
	Two	12	Base (12)
<b>Combination</b> Combination systems add the best of both systems without compromise. The systems can be run in union or independently to aid relaxation or help invigorate.	One	6+12	Sides (3+3) & base (12)
	Two	14+12	Sides (3+3) + ends (4+4) & base (12)



**Electronic upgrade**  
Removes pneumatic switch and replaces it with an electronic control pad (includes low water sensor)



**Whirlpool cleaner**  
1 litre of whirlpool cleaner for hygiene and peace of mind



**Overflow filler**  
Allows the installer to connect the hot water feeds to the overflow for filling the bath





Whirlpool systems



Jets feed water into the bath at pressure to offer an invigorating bathing experience.



Level One

**Summary**  
6 jet system

**Jet type & location**  
3 midi jets down each side

**Switch type**  
Pneumatic switch

**Fittings**  
Engineered legset

**Included**  
Pop up waste & overflow



Level Two

**Summary**  
8 jet system

**Jet type & location**  
4 midi jets down each side

**Switch type**  
Pneumatic switch

**Fittings**  
Engineered legset

**Included**  
Pop up waste & overflow



Level Three

**Summary**  
14 jet system

**Jet type & location**  
3 midi jets down each side  
4 micro jets at each end

**Switch type**  
Pneumatic switch

**Fittings**  
Engineered legset

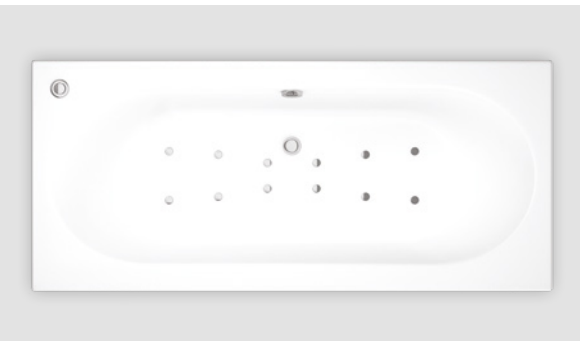
**Included**  
Pop up waste & overflow



Airspa systems



Air bubbles are released into the water producing a gentle, calming massaging fizz.



Level One

**Summary**  
12 jet airspa system  
12 jet airspa system heated (level two)

**Switch type**  
Pneumatic switch

**Fittings**  
Engineered legset

**Included**  
Pop up waste & overflow



Level One

**Summary**  
6 jet whirlpool system & 12 jet airspa

**Jet type & location**  
3 midi jets down each side

**Airspa**  
12 jet airspa system heated

**Switch type**  
Pneumatic switch

**Fittings**  
Engineered legset

**Included**  
Pop up waste & overflow



Level Two

**Summary**  
14 jet whirlpool system & 12 jet airspa

**Jet type & location**  
3 midi jets down each side  
4 micro jets at each end

**Airspa**  
12 jet airspa system heated

**Switch type**  
Pneumatic switch

**LED light**  
One light that can change colour

**Fittings**  
Engineered legset

**Included**  
Pop up waste & overflow







Ramsden & Mosley

Baths



Superior Manufacturing,  
& Luxurious Bathing.

The range of Ramsden & Mosley solid surface baths are manufactured from a mix of high-grade polymers and natural minerals. The balance of quality raw materials, investment in modern equipment and artisan craftsmen results in a range of products that are technically superior. Every Ramsden & Mosley bath is manually polished for several hours, by hand, to create a product that looks and feels beautiful.



DESIGN

Carefully considered aesthetics for all bathrooms



COMFORT

Offering contentment and relaxation



DURABILITY

Considers endurance and longevity



SIZE

Recognises the concern with space

– QUALITY –  
SINCE 1975



Ramsden & Mosley

Dedication to the  
highest quality

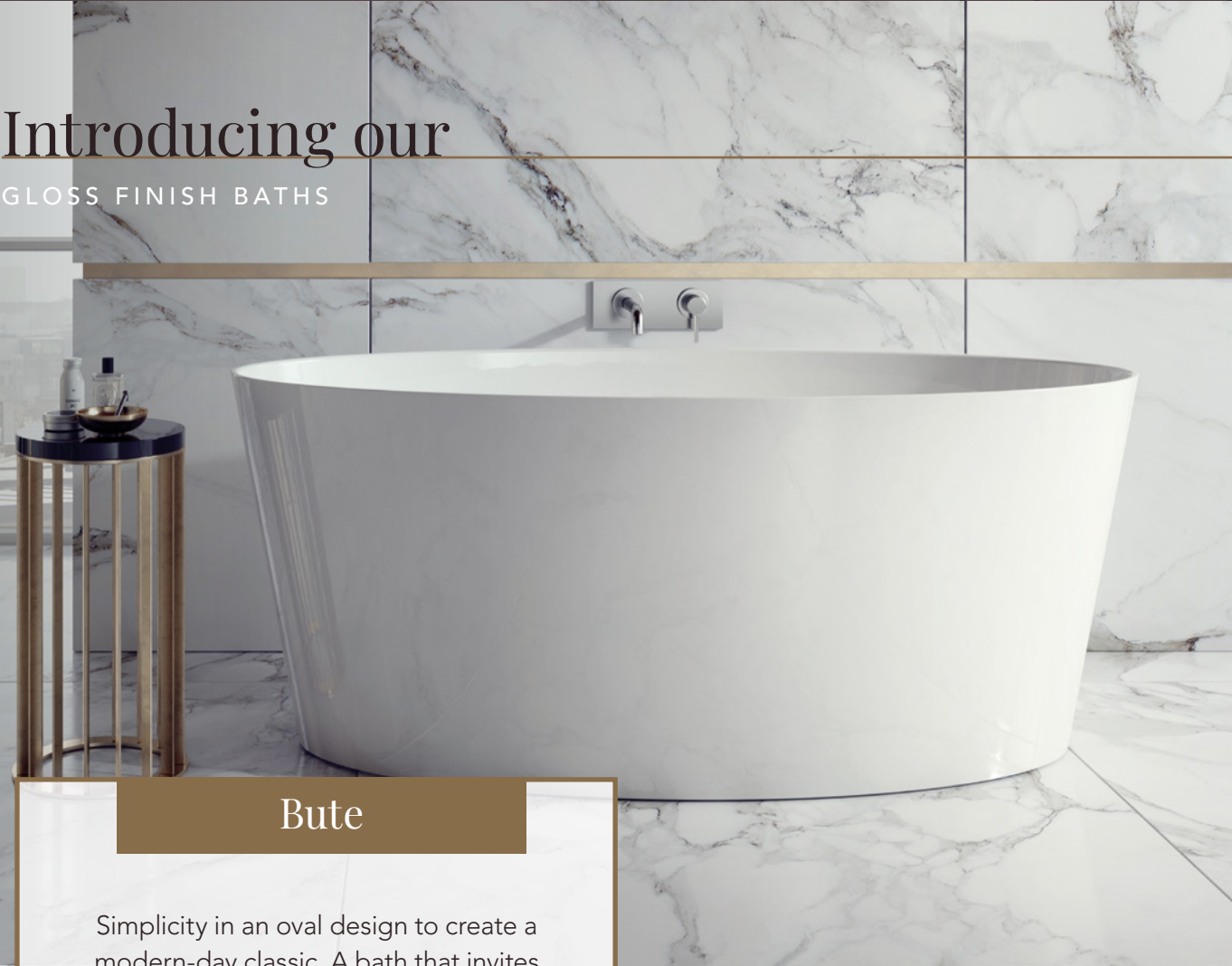
It is recognised that a quality product is borne out of using only the finest raw materials available and combining these with modern technology and skilled craftsmen with an eye for detail.







Introducing our  
GLOSS FINISH BATHS



Bute

Simplicity in an oval design to create a modern-day classic. A bath that invites you to escape modern life and relax.



Sizes Available (mm)	Weight (kg)	Capacity (l)
1600x720	85	260

Advice:  
Factory fitted click clack waste.

Construction:  
Gloss Finish

Constructed from a dolomite resin mix with a gel coat outer and inner coat, creating a stunning gloss effect finish.

Each bath has been cast from a single mould to produce solid, beautifully smooth, heat and scratch resistant surfaces.



Jura

A glamorous mix of modern and traditional design, the Jura is designed for the more compact bathroom that deserves a timeless feature bath.



Sizes Available (mm)	Weight (kg)	Capacity (l)
1600x690	76	160

Advice:  
Factory fitted click clack waste.

Steeped in British  
manufacturing  
history

Steeped in British bath manufacturing history, the Ramsden & Mosley range of beautiful solid surface baths are named after the isles that surround Britain.







Iona

A truly stunning contemporary floor standing double ended bath. Compact and graceful to create a beautiful centrepiece for the smaller bathroom.



Sizes Available (mm)	Weight (kg)	Capacity (l)
1600x690	83	160

Advice:  
Factory fitted click clack waste.

Ethically sourced

All Ramsden & Mosley products are manufactured with the environment in mind and we strive to deliver a product that is not only made from the finest materials but that are ethically sourced too.



Canna

A modern single ended free standing bath with an extended backrest for additional support during long soaks. Designed to be the showpiece of any bathroom.



Sizes Available (mm)	Weight (kg)	Capacity (l)
1700x710	100	170

Advice:  
Factory fitted click clack waste.







# Introducing our

MATT FINISH BATHS



## Hellisay

A contemporary double ended curved bath, coupled with straight internal sides to generate a cavernous bathing area. Crafted in a single piece with an integral overflow.

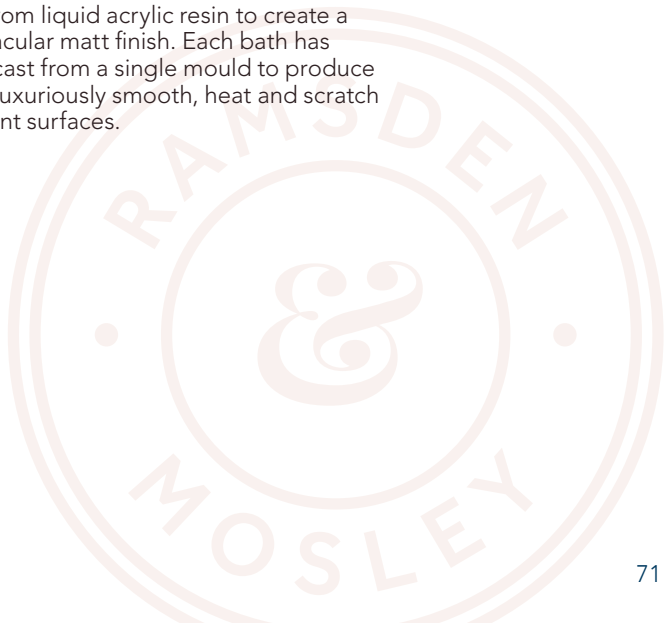


Sizes Available (mm)	Weight (kg)	Capacity (l)
1800x800	125	125
1700x750	115	115

**Advice:**  
Factory fitted click clack waste and integral overflow.

## Construction: Matt Finish

Cast from liquid acrylic resin to create a spectacular matt finish. Each bath has been cast from a single mould to produce solid, luxuriously smooth, heat and scratch resistant surfaces.







### Anglesey

Strong lines complement subtle curves to create a sophisticated double ended freestanding bath. Ergonomically crafted to create an ideal escape for two or your own personal sanctuary. Crafted in a single piece with an integral overflow.



Sizes Available (mm)	Weight (kg)	Capacity (l)
1800x800	130	330
1700x750	120	280

**Advice:**  
Factory fitted click clack waste and integral overflow.



### Cara

Designed with simplicity and comfort in mind. The Cara bath combines a modern design with extreme comfort and low step-in height. An elegant freestanding bath design.



Sizes Available (mm)	Weight (kg)	Capacity (l)
1700x750	88	150

**Advice:**  
Factory fitted click clack waste.







## Baths

**Bathe Easy**  
BY TROJAN

*Our specialist range of easy access baths, designed to take the worry out of bathing.*

Bath time should be a relaxing, enjoyable experience but for some, getting in and out of the bath can be difficult and stressful without help.

Our specialist range of low threshold easy access baths are designed to take the worry out of bathing. Manufactured to the highest standard, you can relax in the knowledge that our baths are designed with your comfort and safety in mind.



### COMFORT

Offering contentment and relaxation



### EASY ACCESS

Acknowledges a variety of bathing needs



### SIZE

Recognises the concern with space



Bathe Easy

Walk-In Shower Baths

## L SHAPED SOLARNA

*This contemporary design features a low threshold door and is a perfect shower bath for all.*



(RH shown)

**Sizes Available (LH & RH):**  
1700x850x700

### Advice:

Low threshold door

10mm tempered glass door treated with transparent water stain protector

Manual locking system with simple to operate push and pull mechanism (20 Newtons / 4.5lbs of pressure)

Metal components (handle, lock and hinges) manufactured in polished Stainless Steel Alloy - Grade 304

Shower screen included

Supplied with twin pop up wastes as well as front and end panels.

### Did you know?

In the UK, 99.1% of disabled children live at home and are supported by their families. That is why we've made sure we have great family baths for all ages and abilities.

## Walk-In Shower Baths

*Elegantly designed, our P and L shaped shower baths include key safety features and allow comfortable, safe bathing. These baths offer an ideal solution for easy access bathing and showering, without the need to climb in or out.*

Available in left or right handed options, each walk-in shower bath features an anti-slip base for added peace of mind. Each bath includes a shower screen and front and end panels. The baths access door is not located at the tap end, to avoid glass over glass when the screen is required. Both baths feature twin waste for up to 40% quicker drainage for added safety.



**Elderly**



**Families**

## P SHAPED CONCERT

*Elegantly designed, our P shaped shower bath includes key safety features and allows comfortable, safe bathing and showering.*



(RH shown)

**Sizes Available (LH & RH):**  
1675x850x750

### Advice:

Low threshold door

10mm tempered glass door treated with transparent water stain protector

Manual locking system with simple to operate push and pull mechanism (20 Newtons / 4.5lbs of pressure)

Metal components (handle, lock and hinges) manufactured in polished Stainless Steel Alloy - Grade 304

Shower screen included

Supplied with twin pop up wastes as well as front and end panels.







## Walk-In Baths

For some, it can be difficult getting into a regular bath as the sides are too high to step over. The Bathe Easy walk-in bath range ensures easy bathing for those with restricted mobility, without the need to climb in and out. Great for those with little children too, saving your back from all of the strain!



Elderly



Families

### CASCADE

*Perfect for those who love to bathe but don't want the worry of climbing in and out.*



(LH shown)



Sizes Available (LH & RH):  
1500x700, 1700x700

#### Advice:

Anti-slip base for added peace of mind  
Low threshold, 10mm tempered glass door treated with transparent water stain protector  
Manual locking system with simple to operate push and pull mechanism (20 Newtons / 4.5lbs of pressure)  
Metal components (handle, lock and hinges) manufactured in polished Stainless Steel Alloy - Grade 304  
Twin waste for up to 40% quicker drainage and added safety  
Supplied with twin pop up wastes as well as front and end panels.



### STYLE

*Suitable for the entire family, this modern design features a low threshold door and a full width fold down seat for ease and versatility.*



(LH shown)

Sizes Available (LH & RH):  
1700x750, 1800x800

#### Advice:

Low threshold door  
8mm tempered glass access door  
6mm tempered glass shower screen  
Fixed glass shower screen with hinged section  
Manual locking system with simple to operate push and pull mechanism  
Easy-click front & end glass panels  
Supplied with a cushioned headrest, a foldable seat and pop up waste.

#### Did you know?

59% of disabled people who are 65 and over in the UK say that they will need accessible housing features in the next 5 years.





## Deep Soak Baths

A safe, stable solution for areas unable to fit a full size bath, deep soak baths are suitable for those with mobility problems. With attractive styling, and a built in seat they offer a relaxing, comfortable bathing experience.



Elderly



Specialist

Suitable for those with additional physical requirements.

### FREEDOM MINI

*The Freedom Mini is one of the most compact deep soaking walk-in baths on the market, with an integral contoured seat and same generous door opening as the standard Freedom bath.*



Sizes Available (LH & RH):  
1060x660x936

#### Advice:

Inward opening door  
Slip resistant base

Simple to operate, single lever door locking mechanism  
Comfortable integrated seat with contoured back  
Seat height of 370mm, overall internal depth of 775mm  
Single waste and overflow for simple installation  
Supplied with front and end panels.

### Did you know?

There are around 13.3 million disabled people in the UK (almost 1 in 5 of the population).

Deep Soak Baths

Deep Soak Baths



### FREEDOM

*With an inward opening door, which widens to 370mm for easier access, the Freedom bath is the ideal deep soak bath for smaller bathrooms.*



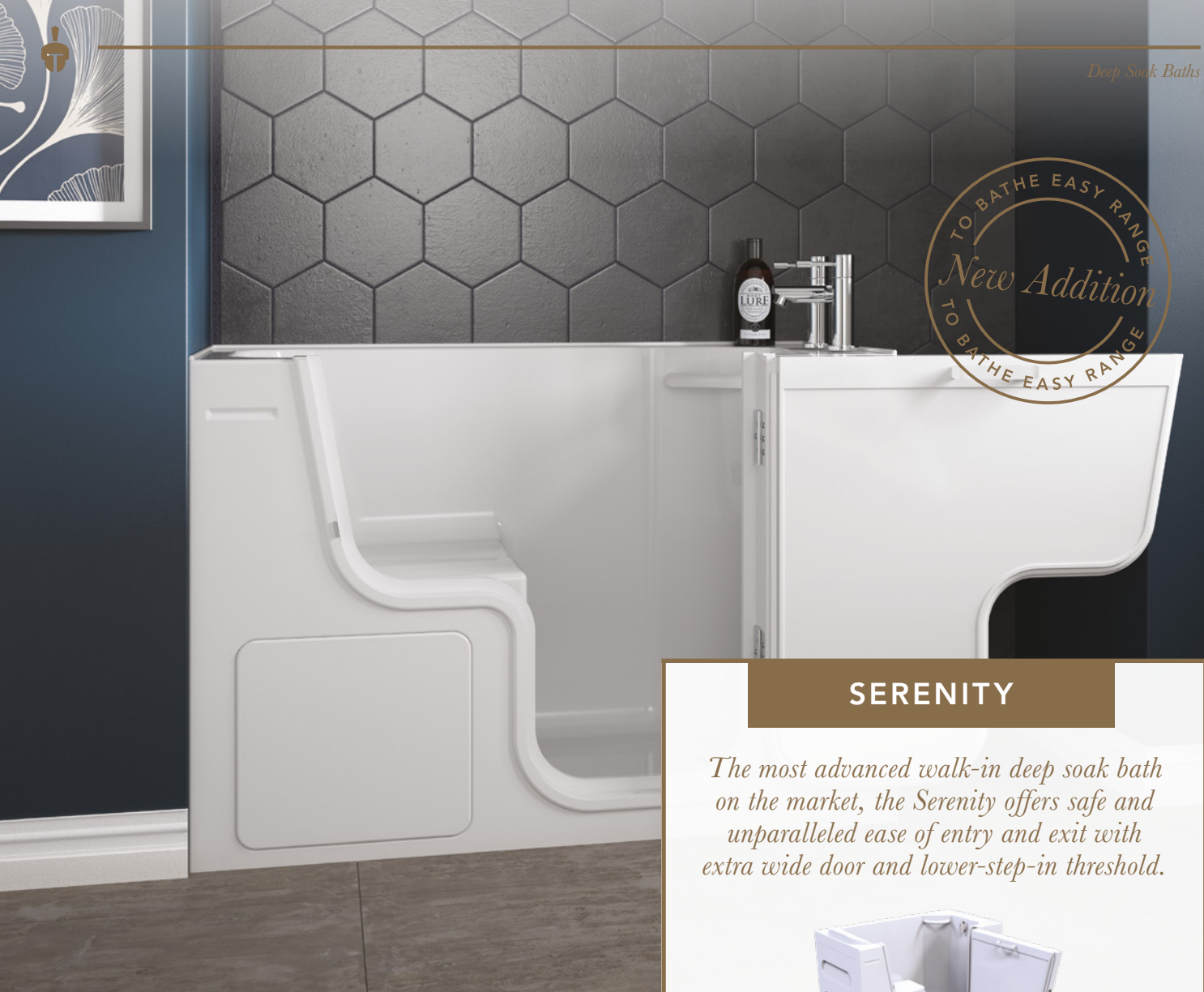
Sizes Available (LH & RH):  
1270x660x936

#### Advice:

Elegantly designed with its contoured lines and stylish appearance  
Significantly lower than other walk-in baths  
Twin wastes for faster drainage & safety  
Strategically shaped inward opening door to allow for ease of entry  
Robust stainless steel door handle allows for ease of door closure  
Slip resistant base  
Textured seat at a generous height for comfort  
Extended back rest  
Constructed from highest grade GRP for durability  
Supplied with twin pop up wastes as well as front and end panels.







## SERENITY

*The most advanced walk-in deep soak bath on the market, the Serenity offers safe and unparalleled ease of entry and exit with extra wide door and lower-step-in threshold.*



(RH shown)

**Sizes Available (LH & RH):**  
1300x660, 1300x750

### Advice:

- Exceptional 800mm wide door
- Seat well is exposed for a simple 'sit down and slide in' movement
- Ramped seat at 545mm high from the bathroom floor allows for easy transfer from a wheelchair
- Effortless lever handle with concealed catch bolt, ideal for arthritic hands
- Free standing and partly assembled for faster installation
- Patented door and water seal system
- Unique drain and pop up waste for faster drainage
- Slip resistant base
- Two internal grab rails
- Maximum user weight 35 stone
- Supplied with front and end panels



### Families



### Elderly

Suitable for those with additional physical requirements.



### Specialist

## Our 10 year guarantee

All of our Bathe Easy baths come with a confident 10 year guarantee against manufacturing defects, as all of our products are built to last!



## COMFORT

*A safe, stable solution for areas unable to fit a full size bath, our Comfort deep soak bath is suitable for all those with mobility problems.*



(RH shown)

**Sizes Available (LH & RH):**  
1210x650

### Advice:

- Low threshold door
- Anti-slip base for added peace of mind
- 10mm tempered glass door treated with transparent water stain protector
- Manual locking system with simple to operate push and pull mechanism (20 Newtons / 4.5lbs of pressure)
- Metal components (handle, lock and hinges) manufactured in polished Stainless Steel Alloy - Grade 304
- Twin waste for up to 40% quicker drainage and added safety
- Comfortable integrated seat
- Supplied with twin pop up wastes as well as front and end panels.



*The simple 'sit down and slide in' seat makes for the easiest bathing experience.*





## Power Traverse Bath

Combining impressive levels of performance with exceptional value, the Marcella is designed to be a cost effective bathing solution suitable in a variety of care environments. The Marcella comes with powered seat traverse to ensure the safe and efficient transfer of bathers in and out of the bath.

With its energy-efficient keyhole design and array of water-saving features, this versatile bathing system is extremely economical to run. Compact enough to fit into the space of a traditional style bath, the Marcella's remarkably long internal length and extra-wide seating area also delivers outstanding levels of comfort.



Elderly



Specialist

Suitable for those with additional physical requirements.



Easily and safely transfers bathers in and out of the bath.

## MARCELLA

*The new Marcella bath is designed with a powered seat traverse to deliver a safe and easy bathing experience for all.*



**Sizes Available (LH & RH):**  
1500x750, 1700x750

### Advice:

- Powered seat traverse effortlessly transfers the bather into and out of the bath
- Featuring integrated BioCote anti-microbial technology as standard
- Innovative keyhole design reduces water usage whilst retaining wide seating area ensuring optimum comfort for bathers
- Easy-to-clean seat with nursing arms and integratedommel offers enhanced support
- Lightweight, ergonomic handset control
- 165kg safe lifting weight accommodates a wide variety of bather sizes
- Supplied with front and end panels
- WRAS approved chrome lever tap inc. TMV3 valve Waste Kit

Power Traverse Baths



### Did you know?

1 in 8 adults (around 6.5 million people) in the UK are carers. By 2037, it's anticipated that the number of carers will increase to 9 million. Over 1 million people care for more than one person too.







### Did you know?

By 2033 the number of people aged 85 and over in the UK is projected to more than double again to reach 3.2 million, and will account for 5% of the total population.

## LIBERTY

*The Liberty power seat bath provides a safe, reassuring independent bathing environment.*

*The simple easy close, inward opening door gives clear uncluttered access, while the integral powered lift seat allows gentle lowering and lifting in and out of the bath.*



**Sizes Available (LH & RH):**  
1700x700

#### Advice:

- Easy close door
- Easy access via inward opening, gadget free door
- Integral, contoured seat with fold down arm-rests for bather comfort and support
- Low step height
- Powered lifting and lowering up to 24 stone (150kg)
- Specially moulded bath designed to complement the seat allows for deeper bathing experience
- Same capacity and size of conventional bath
- Safety features include automatic battery back-up in event of mains power failure
- Slip resistant base
- Twin pop up wastes for faster drainage
- Easy installation of powered lift - fits onto bath sub frame with no special requirements
- Supplied with twin pop up wastes as well as front and end panels.





## GRAB RAILS & ACCESSORIES

*Our range of brassware has been developed with the wellbeing and safety of the whole family in mind, but particularly for those who are a little unsteady on their feet.*

With our range of stainless steel grab rails and accessories, we ensure a high quality, reliable product but one which fits into any bathroom seamlessly as the style and form is just as high a priority. The classic stainless steel is easy to clean and has a long life guarantee too.

### Vertical Grab Rail with Shower Head Holder

Our slider grab rail includes a single handed operation shower head holder, for those who have limited hand use. These rails are produced in a 994mm length and are suitable for a person sitting in the shower area but also suitable for a person standing, and add to assisting others in showering. The rail incorporates a stylish shower handset holder, which is designed for use with one hand, by gently squeezing the handle to increase the height, or lower the shower head.



### Straight Safety Grab Rail

**Sizes Available:** 385, 537, 994mm

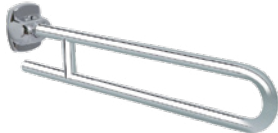
Our range of grab rails have been designed to enhance the shower or bathroom without looking institutional or clinical. They offer a warm and homely feel to the bathroom environment, and the two tone chrome and colour is both stylish and practical. All fixings are concealed, making the product aesthetically pleasing too.



### Side Folding Safety Support

**Sizes Available:** 650, 750mm

This range has been developed to offer safety support to the growing ageing population and improving quality of life. It is elegant and discrete but safe and strong and folds away to give extra space. All fixings are concealed, making the product aesthetically pleasing too.



### Adjustable Bath Seat

**Sizes Available:** 800x334x162mm  
**Max weight capacity:** 150kg

This great removable chair has an expandable width of 66cm to 80cm, allowing all bathers to sit comfortably. Coated with biocompatible, warm-to-the-touch white vinyl.



### Fixed Bath Seat

**Sizes Available:** 700x308x153mm  
**Max weight capacity:** 150kg

Coated with biocompatible, warm-to-the-touch white vinyl.



### Fold Down Shower Seat

Slightly wider than the average shower seat, this new product from Bathe Easy has a slimmer design so as it folds against the wall it protrudes by only 70mm. A small water outlet hole is in the centre of the seat which prevents water filling the seat area. All fixings are concealed, making the product aesthetically pleasing too.







# SHOWERS & ACCESSORIES

Our range of showers and accessories have been developed to work hand-in-hand with our Bathe Easy range of baths to offer maximum safety.

## CUBE DELUXE

Geometric and minimalistic styling define the Cube Deluxe showering range from Bathe Easy. Combined with its thermostatic protection and innovative features to aid installation, it's a popular and reliable choice time after time. The Bathe Easy Cube Deluxe range has all you need for a great looking bathroom that is also as safe as it can be!

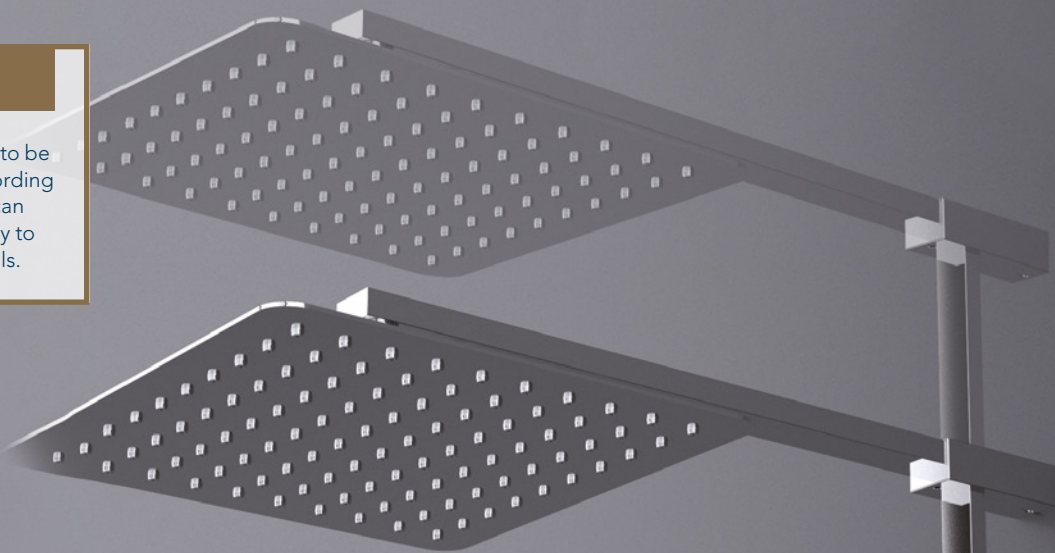
### SMOOTH SHOWER HOSE

There are a number of benefits to a smooth shower hose, from the ease of cleaning - as limescale cannot build up - through to it being kink and leak proof. It also offers a safer shower as it avoids nips and fingers getting caught.



### TELESCOPIC RISER

Allows the height of the riser to be easily adjusted and fixed according to requirement. The riser can also be adjusted horizontally to accommodate uneven walls.



### MULTI-FUNCTION HANDSET

With 3 different functions, you get to choose.



### SAFE TOUCH BODY

The constant circulation of cold water under the surface of the valves ensures the surface will never be hot to touch.



The constant circulation of cold water under the surface of the valves ensures the surface will never be hot to touch.



All Cube Deluxe bar showers feature proven anti-scald thermostatic technology.

## CUBE DELUXE SAFE TOUCH SINGLE SHOWER



Cube Deluxe safe touch thermostatic shower with flexible slide rail kit, smooth hose and push button handset.

Accredited TMV2 approval from BuildCert. WRAS approved.



## CUBE DELUXE SAFE TOUCH DOUBLE SHOWER



Cube Deluxe safe touch thermostatic shower with adjustable riser, large stainless steel overhead soaker, push button handset and smooth hose.

Accredited TMV2 approval from BuildCert. WRAS approved.

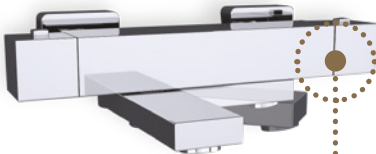


## CLASSIC DELUXE SAFE TOUCH BATH SHOWER MIXER



Classic Deluxe safe touch thermostatic bath shower mixer with deck mounting legs, flexible slide rail kit, push button handset and smooth hose. The perfect addition to any Bathe Easy bath, this mixer gives fail safe protection on both the hot and cold supplies. Supplied with bath connectors so can be either wall mounted or bath mounted (shown).

## CUBE DELUXE SAFE TOUCH BATH SHOWER MIXER



Cube Deluxe safe touch thermostatic bath shower mixer supplied with deck mounting legs, flexible slide rail kit, push button handset and smooth hose. The perfect addition to any Bathe Easy bath, this mixer gives fail safe protection on both the hot and cold supplies. Supplied with bath connectors so can be either wall mounted (shown) or bath mounted.

Convenient, retractable diverting bath spout. The bath spout can easily be retracted under the bar valve for comfort and convenience. Supplied with bath connectors so can be either wall mounted or bath mounted.





# SHOWERS & ACCESSORIES

## CLASSIC DELUXE

The Classic Deluxe range is the ultimate combination of form and function featuring safe touch valve bodies and Bathe Easy's proven anti-scald thermostatic technology. Give yourself peace of mind with our Classic Deluxe range that also has the benefit of looking pretty sleek too!

### Did you know?

This is the first time Bathe Easy have introduced anti-scald thermostatic technology! Shower bars are so easily accessed when in a bath or shower that we believed it was paramount to improve safety in this area.

#### TELESCOPIC RISER

Allows the height of the riser to be easily adjusted and fixed according to requirement. The riser can also be adjusted horizontally to accommodate uneven walls.

#### SAFE TOUCH BODY

The constant circulation of cold water under the surface of the valves ensures the surface will never be hot to touch.

#### PUSH FUNCTION HANDSET

With an Aerating Spa Jet function you can choose the setting just right for you.



#### ADJUSTABLE FIXING POINTS FOR RISER

Allows the installer to set fixing centres accordingly for specific installation.



The constant circulation of cold water under the surface of the valves ensures the surface will never be hot to touch.



All Classic Deluxe bar showers feature proven anti-scald thermostatic technology.

## CLASSIC DELUXE SAFE TOUCH SINGLE SHOWER



Our Bathe Easy Classic Deluxe shower has a thermostatic safe touch bar, ensuring no scalds or nasty surprises while showering! With a flexible slide rail kit, the shower can be any height to suit the user, perfect for the whole family. Plus the push button handset allows easy grip and the smooth hose avoids any water and dirt build up - great for easy cleaning too!

Accredited TMV2 approval from BuildCert. WRAS approved.



## CLASSIC DELUXE SAFE TOUCH SHOWER MIXER



Classic Deluxe thermostatic safe touch bar shower with push button handset and smooth hose (no slide rail kit). This shower mixer will never be hot to touch as it had a constant circulation of cold water under the surface.

Accredited TMV2 approval from BuildCert. WRAS approved.



## CLASSIC DELUXE SAFE TOUCH DOUBLE SHOWER



The Bathe Easy Classic Deluxe double shower has a large static overhead soaker that gives a rainfall effect but then a handy telescopic riser for easy use. The push button handset makes the choice of water flow simple and a fun feature for all the family. This shower is extremely easy to turn on and off, as well as control temperature given the carefully designed handles.

Accredited TMV2 approval from BuildCert. WRAS approved.



## VERTICAL GRAB RAIL WITH SHOWER HEAD HOLDER



Our vertical grab and shower slide rail offers additional peace of mind allowing users to steady themselves whilst under the shower.

The vertical grab and shower slide rail should be bought with the Classic Deluxe Safe Touch Shower Mixer (left).

The vertical grab and shower slide rail can also be bought with any of our single outlet showers as an alternative rail.







## Simply No Slip



Soapy water and smooth, curved or sloping surfaces can combine to make bathrooms, particularly baths and shower trays, very slippery and potentially dangerous – especially for young children or those who aren't steady on their feet.



### COMFORT

Offering contentment and relaxation



### SAFETY FIRST

Acknowledges a variety of bathing needs



### DURABILITY

Considers endurance and longevity

Simply No Slip



Simply No Slip

Simply No Slip is a slip resistant coating, designed to be applied to acrylic and gel coat surfaces. As well as baths and shower trays, it is also suitable for outdoor hot tubs, swimming pool steps and fibreglass boats.

Simply No Slip is easy to apply and ensures the surface is much less hazardous when wet. It is a permanent, hygienic and practical alternative to bath and shower mats and paint or tapes. Avoid slips and falls with this innovative, easy to apply slip resistant treatment.

There are two types of treatment, one designed for acrylic/gel coat surfaces and the other for ceramic, steel, cast iron and porcelain.

## Thinking of you

Reduce the chance of slips and falls with this innovative easy to apply, post installation slip resistant treatment.



Stay Safe





## Acrylic Slip Resistant Treatment

- Designed to be applied to acrylic bath and shower trays and gel coat trays
- Also suitable for hot tubs and fibreglass boats
- Simple roller application
- Creates a subtle grainy, translucent finish
- Long-lasting
- Hygienic alternative to bath mats or stickers
- Does not damage the surface being treated
- Ready to use in 24 hours
- 1 kit treats 1m<sup>2</sup> area
- Suitable for residential and commercial use.

### Key features

- Easy to apply
- Hygienic alternative to bath mats and stickers
- Dry and ready to use in 24 hours on acrylic baths.

## Ceramic, steel, cast iron and porcelain Slip Resistant Treatment

- Designed to be applied to ceramic steel, cast iron and porcelain baths
- Simple sponge application
- Application process may be repeated to achieved desired results
- Creates an invisible, subtle finish
- Long-lasting
- Hygienic alternative to bath mats or stickers
- Ready to use straight away
- Suitable for residential and commercial use.







*Fittings*



**TROJAN**

Throughout this brochure, there are references to the Fittings that come with each bath Trojan manufacture. In the next 5 pages we give the detail behind each of type of fitting we offer. However, the fittings vary dependent on geographical location so any queries, please do not hesitate to get in touch on 01484 648181.

*Fittings*

*Fittings*



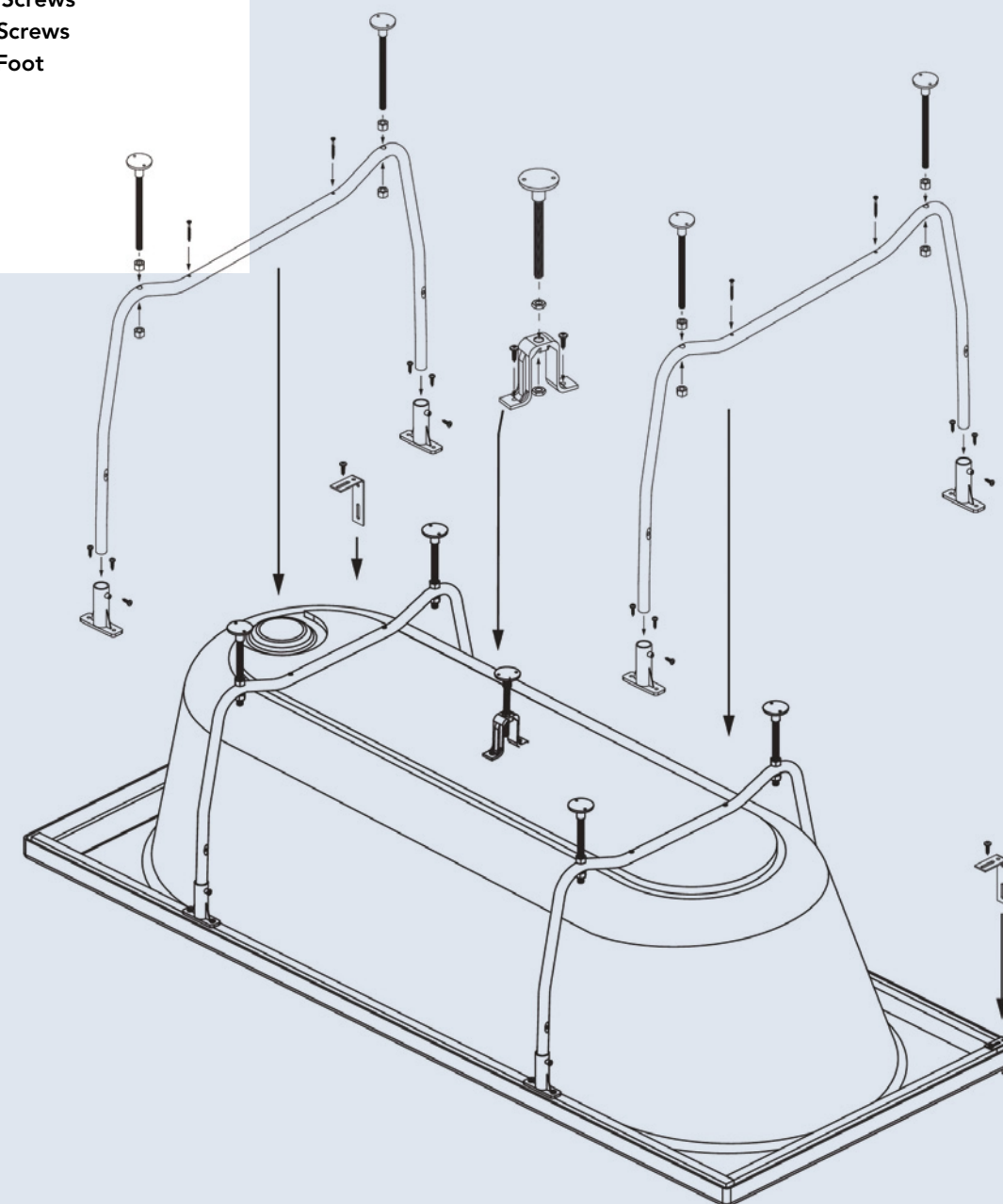
# CRADLE

## *Fittings*

(UK only)

### Parts provided:

- x1 Pair of Tubular Cradles
- x4 Cradle Toggles
- x4 M10 x 152mm Feet
- x2 Wall Fixing Brackets
- x4 Transit Cradle Fixing Screws
- x16 16mm Self Tapping Screws
- x1 M8 x 117mm Centre Foot
- x1 Centre Foot Bracket
- x8 M10 Nuts
- x2 M8 Nuts





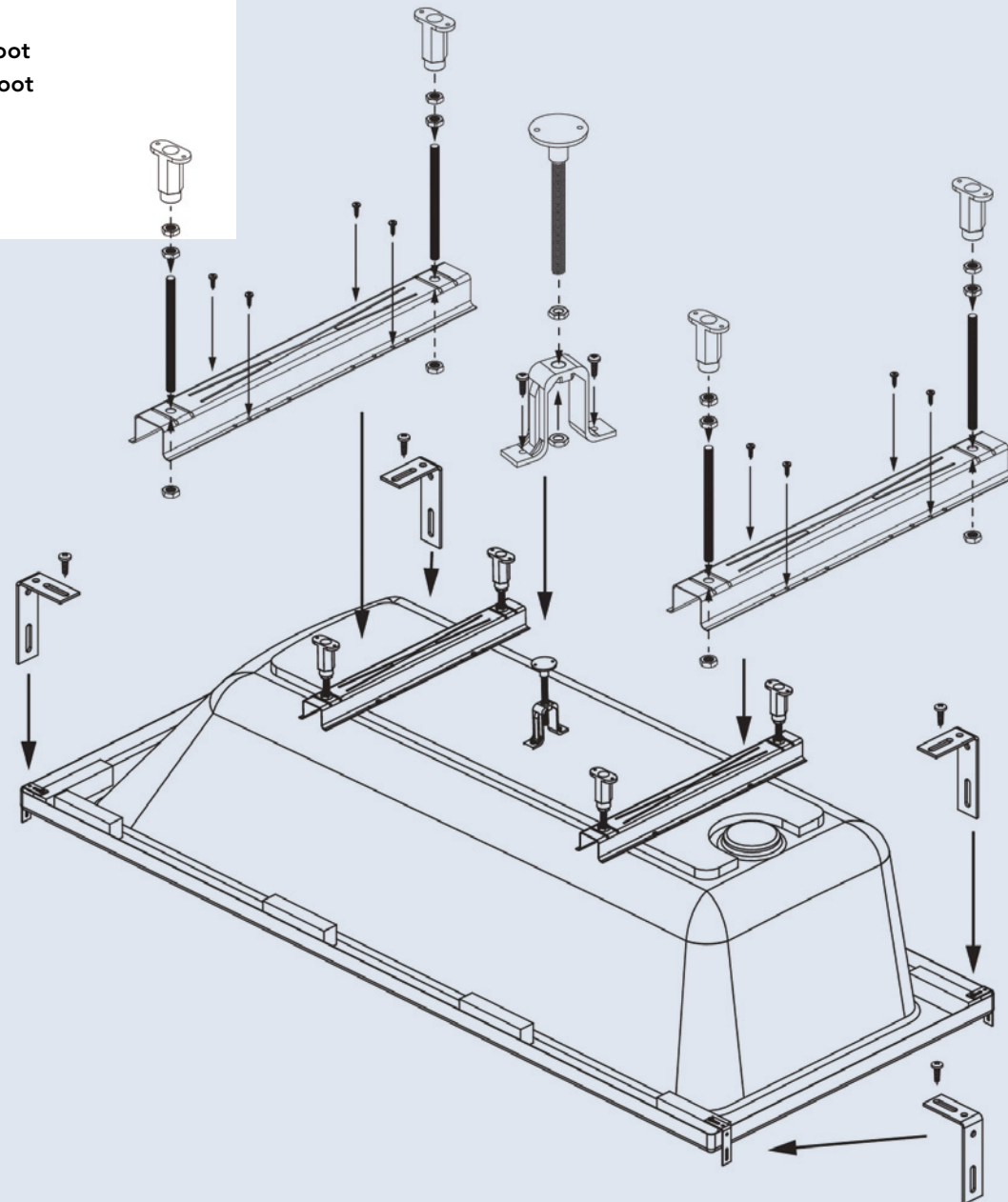


# CONTINENTAL

## *Fittings*

### Parts provided:

- x2 500mm Channels
- x4 M12 x 120mm Allthreads
- x4 16mm Self Tapping Screws
- x4 Wall Fixing Brackets
- x4 M12 x 65mm Plastic Foot
- x12 M12 Nuts
- x4 M8 x 90mm Plastic Foot
- x1 M8 x 90mm Centre Foot
- x1 Centre Foot Bracket
- x2 M8 Nuts

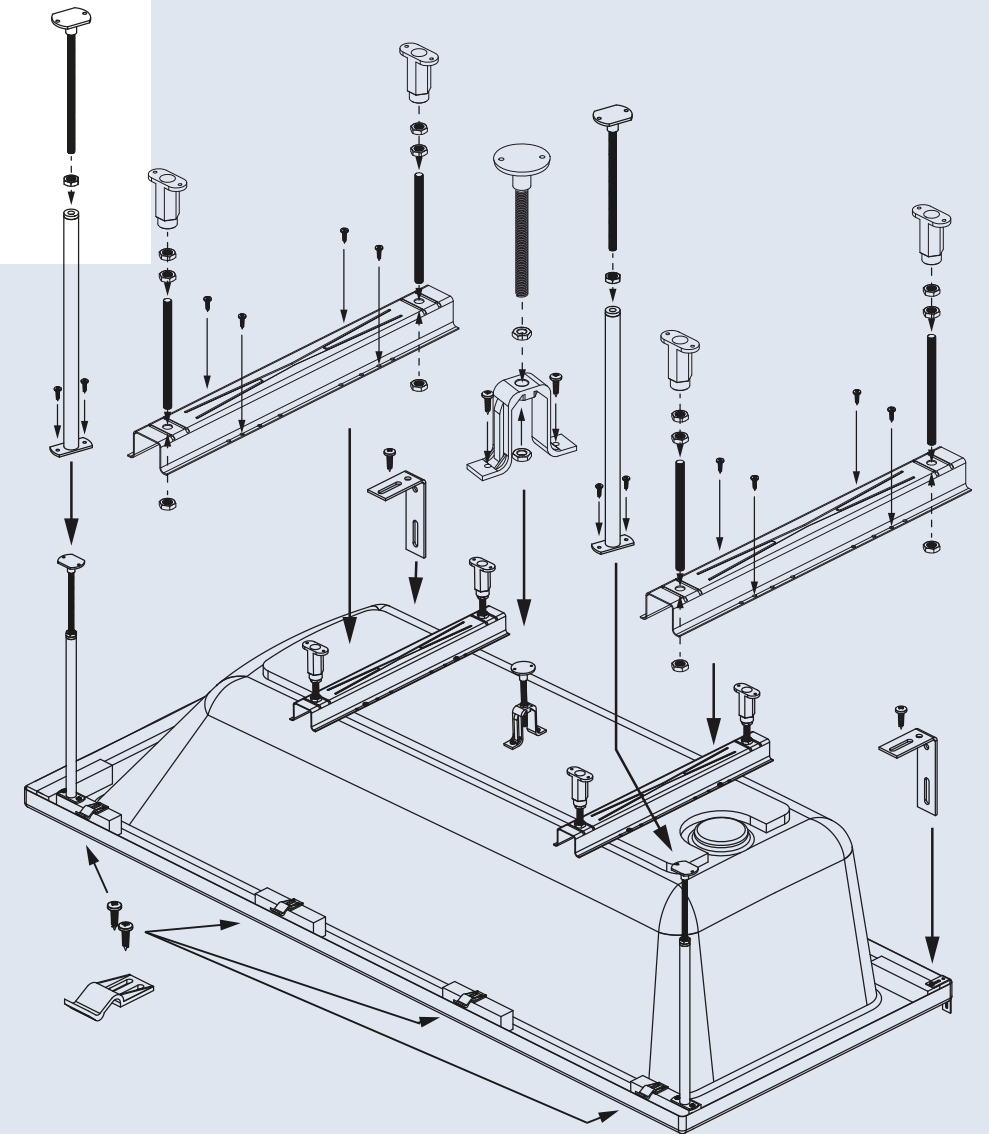


# LUXURY

## *Fittings*

### Parts provided:

- x2 500mm Channels
- x4 M12 x 120mm Allthreads
- x4 16mm Self Tapping Screws
- x4 Wall Fixing Brackets
- x4 M12 x 65mm Plastic Foot
- x12 M12 Nuts
- x4 M8 x 90mm Plastic Foot
- x1 M8 x 90mm Centre Foot
- x1 Centre Foot Bracket
- x2 M8 Nuts
- x2 350mm Jack legs
- x2 M200 Feet
- x2 M10 Locking Nuts
- x8 Panel Clips (may not be required on some installations)





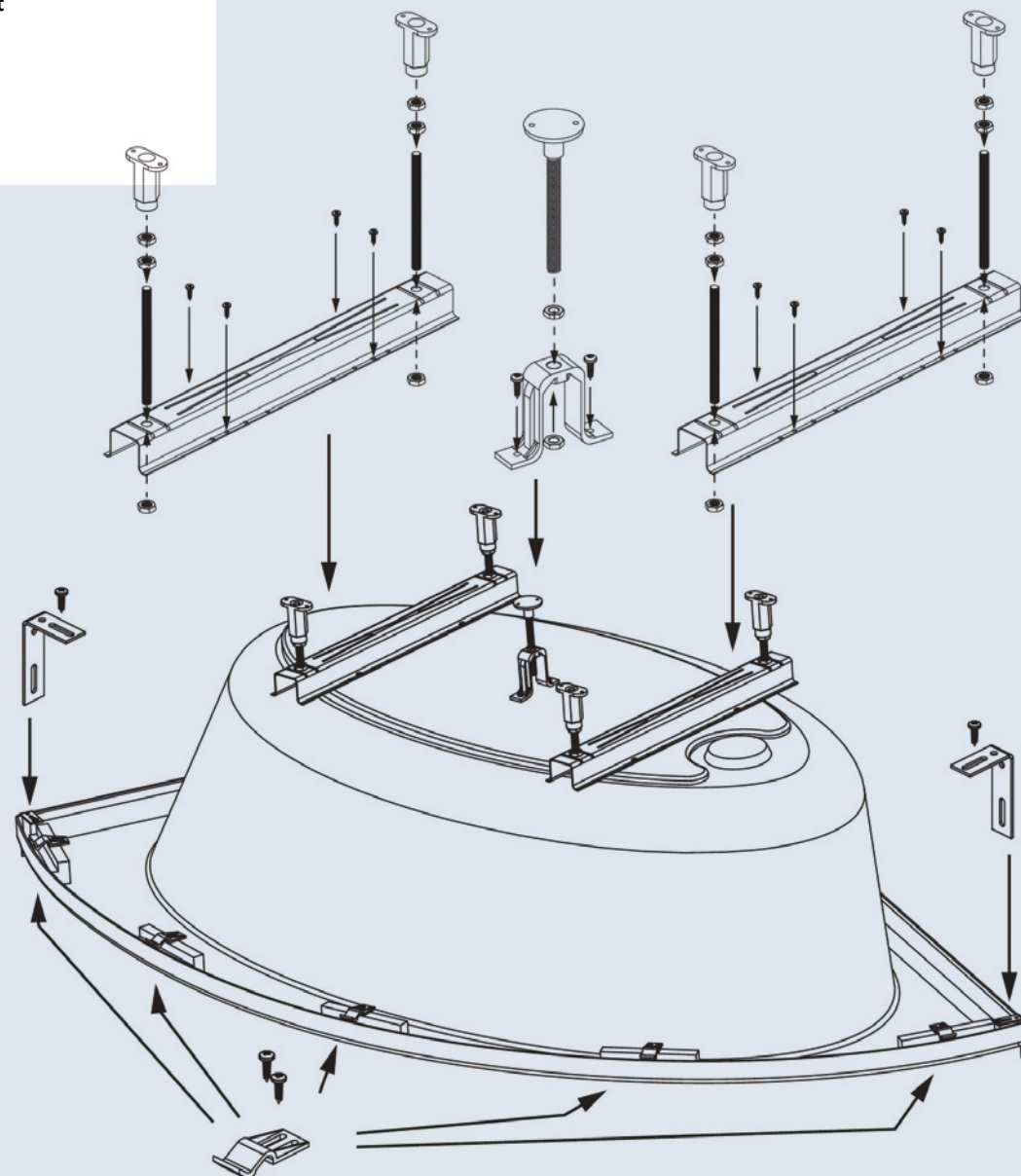


# CORNER

## Fittings

### Parts provided:

- x2 500mm Channels
- x32 16mm Self Tapping Screws
- x4 M12 x 120mm Allthreads
- x2 Wall Fixing Brackets
- x4 M12 x 65mm Plastic Foot
- x8 Panel Clips
- x1 M8 x 90mm Plastic Foot
- x1 Centre Foot Bracket
- x2 M10 Nuts
- x12 M12 Nuts

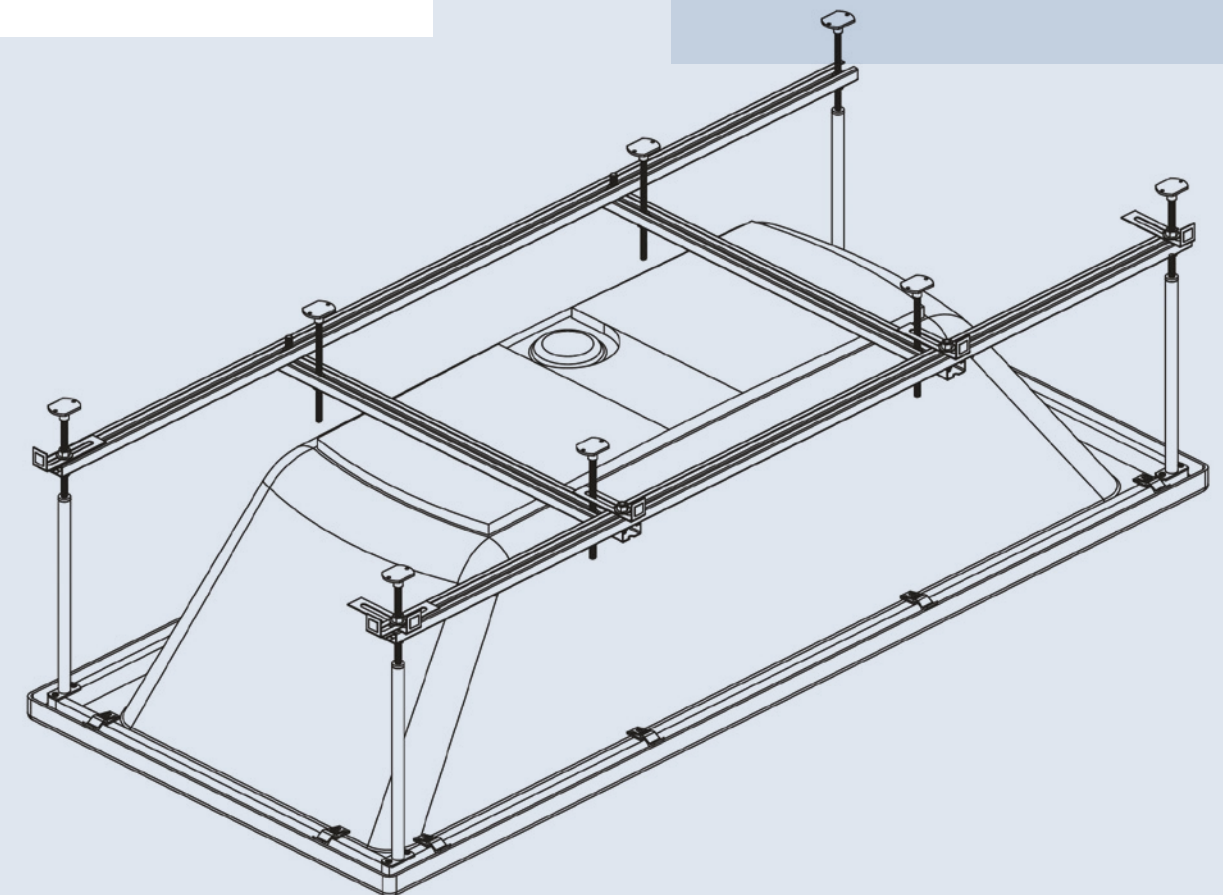


# UNIVERSAL ENGINEERED FRAME

## Fittings

### Parts provided:

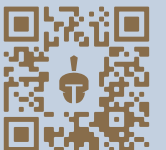
- x2 Adjustable frame lengths (1900.1800.1700.1600)
- x2 Adjustable frame widths (900.800.750.700)
- x4 M10x19x400mm Jack legs
- x8 M10x200mm Oval bath feet
- x1 Centre foot bracket
- x4 Wall fixing brackets
- x6 Metal adjustable panel brackets
- x6 Self-adhesive Velcro pads
- x6 Plastic adjustable panel brackets
- x1 M10x50 Bolts
- x22 M10 Nuts
- x4 Penny washers
- x24 M10 Washers
- x24 32 x No8x16 Self tapping screws



*Watch our  
installation video*

Visit the following URL or scan the QR code  
for easy access to our fittings guide video.

[www.trojan-baths.co.uk/  
fittings-video](http://www.trojan-baths.co.uk/fittings-video)







### *The local community*

We also believe the local community is as important as the global environment, so are proud to support and work alongside local charities.

For more information visit [www.ruddisretreat.org](http://www.ruddisretreat.org) a local charity we continue to support.



With members in more than 60 countries, the BSC is committed to protecting and improving the wellbeing of workers believing that a healthy and safe work environment is also good for business. Here at Trojan, we have always had the same beliefs, with our workforce at the forefront of all investment.

## CSR *Statement*

We aim to make a difference by ensuring two things. The first is that our employees can operate and feel comfortable in a safe and secure workplace. The second is that we maintain a healthy balance between the economy and our ecosystem.

Through investment, training and developing effective internal processes we endeavour to create a positive, ethical working environment. Our dedicated, highly skilled team are fully trained and supported at every step.

The environment is a key concern for Trojan and as such, we are constantly working to ensure our impact on the ecosystem is as minimal as possible. As well as on-site recycling facilities, we manufacture products that will in turn allow consumers to monitor their own impact on the world's resources.

Trojan are proud members of the British Safety Council. Since its foundation in 1957, the British Safety Council has campaigned tirelessly to protect workers from accidents, hazards and unsafe conditions, and played a decisive role in the political process that has led to adoption of landmark safety legislation in the UK.

*At Trojan we strongly believe companies have a responsibility to impact positively on society and the environment.*

## GREENEST *Manufacturers*

Our three manufacturing sites are nestled in the Colne Valley, surrounded by forests, the Huddersfield Narrow Canal and the River Colne. We not only have a strong sense of the responsibility to the surrounding area but to the environment as a whole.

At a local level we are members of the 'Pennine Pack' which is operated by the Green Business Network and offers advice on environmental best practices with regards to waste reduction programmes. In addition, Trojan work closely with the local government and are members of the Environmental Partnership.

This government Partnership actively promotes local businesses to proactively deliver an ongoing carbon reduction programme, something we are proud to be a part of.

At a national and global level, Trojan avoids, where possible, importing raw materials from half way around the world where there is often little regard for the local or national environment.

The majority of the cardboard packaging used for our products is manufactured from 100% recycled board. We also ensure our timber suppliers are FSC certified, enabling us to be confident that our timber is coming from sustainable forests.

### *Disclaimer*

*The information contained in this brochure is done so in good faith, and as such, we accept no liability if errors are found. Technical information is not binding in detail and any recommendations are based upon our wealth of experience and market knowledge. If you have a specific question please feel free to contact our technical staff who will be delighted to advise you further.*

At every step of the way, we endeavour to be the greenest manufacturer. Something we are proud of, and will always work hard to achieve.

*Trojan is situated in the conservation area of Milnsbridge, a district of Huddersfield, West Yorkshire, England.*



## OUR HERITAGE

### *Three factories in Huddersfield, West Yorkshire.*

Ramsden Mills is an 11 acre site in the Milnsbridge district of Huddersfield, West Yorkshire, England. Ramsden Mills has three separate bath manufacturing factories on site, each one designed for a specific manufacturing purpose, including a specialist factory that manufactures our super strong Trojancast baths. In addition we manufacture the majority of our bath panels on the site too.

Firm Mills is a 3 acre site in the Longwood district of Huddersfield. Firm Mills is a single story 48,000sq.ft building dedicated to Trojan Trays. It is also our Group showroom and training academy where we can share our passion and knowledge for what we do.

Ashbrow Mills is a 7 acre site in the Ashbrow district of Huddersfield. Ashbrow Mills is dedicated to our freestanding and solid surface products as well as the home of Aquair, where we assemble the wellness systems onto our baths.



*Take a look at our home...*

[www.trojan-baths.co.uk/drone-video](http://www.trojan-baths.co.uk/drone-video)

*Our 11 acre Ramsden Mills site*

*Our 3 acre Firm Mills site*

*Our 7 acre Ashbrow Mills site*



Trojan Plastics Ltd, Ramsden Mills Britannia Road, Huddersfield, West Yorkshire, HD3 4QG  
[www.trojan-baths.co.uk](http://www.trojan-baths.co.uk) 01484 648181 [sales@trojan-plastics.co.uk](mailto:sales@trojan-plastics.co.uk)   



**AQUAIR**  
WHIRLPOOL BATHS

